



# City of Venice Hurricane Guide 2019



Hurricane season runs from June 1 - Nov. 30. Please keep this guide handy throughout the season, and plan to attend the City of Venice Hurricane Expo, set for April 26-27 at the Venice Community Center. The annual Expo features speakers, vendors, giveaways, and lots of storm information to take and share.

To have a speaker talk to your organization about hurricane preparedness, contact Fire Chief Shawn Carvey at [scarvey@venicegov.com](mailto:scarvey@venicegov.com) or 941-882-7512.

For more information about this publication, contact Public Information Officer Lorraine Anderson at [landerson@venicegov.com](mailto:landerson@venicegov.com) or 941-882-7401.



## Hurricane Season: Be Prepared

Hurricane season in Southwest Florida runs from June 1-Nov. 30. The following summarizes information in the Saffir-Simpson Hurricane Wind Scale . For more information, go to:  
<http://www.nhc.noaa.gov/aboutsshws.php>.

### Category 1: 74-95 mph sustained winds      Very dangerous winds will produce some damage:

Well-constructed frame homes could have damage to roof, shingles, vinyl siding and gutters. Large branches of trees will snap and shallowly rooted trees may be toppled. Extensive damage to power lines and poles likely will result in power outages that could last a few to several days.

### Category 2: 96-110 mph winds      Extremely dangerous winds will cause extensive damage:

Well-constructed frame homes could sustain major roof and siding damage. Many shallowly rooted trees will be snapped or uprooted and block numerous roads. Near-total power loss is expected with outages that could last from several days to weeks.

### Category 3 (major): 111-129 mph winds      Devastating damage will occur:

Well-built framed homes may incur major damage or removal of roof decking and gable ends. Many trees will be snapped or uprooted, blocking numerous roads. Electricity and water will be unavailable for several days to weeks after the storm passes.

### Category 4 (major) 130-156 mph winds      Catastrophic damage will occur:

Well-built framed homes can sustain severe damage with loss of most of the roof structure and/or some exterior walls. Most trees will be snapped or uprooted and power poles downed. Fallen trees and power poles will isolate residential areas. Power outages will last weeks to possibly months. Most of the area will be uninhabitable for weeks or months.

### Category 5 (major) 157 mph or higher winds      Catastrophic damage will occur:

A high percentage of framed homes will be destroyed, with total roof failure and wall collapse. Fallen trees and power poles will isolate residential areas. Power outages will last for weeks to possibly months. Most of the area will be uninhabitable for weeks or months.

— Information provided by the NOAA National Hurricane Center

## Tie down, clean up and prepare for strong winds

**Everyone** should secure all outdoor belongings. It's part of being a good neighbor.

Loose patio furniture, bird feeders, garden ornaments, tools, toys, solar lights and other items left in the yard can be blown into windows and through doors during hurricanes. When something penetrates a building, it can cause total collapse of the structure. Put all loose items indoors. The home you save may be your own.

**Builders:** A city ordinance requires building contractors to secure all construction materials and equipment within 24 hours of the issuance of a hurricane watch. Penalties for not doing so include possible fines, jail time and license review.

## Be Informed

**CodeRED**, a computer software system, can call every city resident with an emergency message in less than four hours. If your phone rings during hurricane season, it could be the city with recorded information about emergency conditions, shelters or other items of interest. To update information to be assured of receiving such calls, go to the city's website: [www.venicegov.com](http://www.venicegov.com) and click on CodeRED at the top of the homepage (above the search bar). Then fill out the form and submit. For more information, contact Public Information Officer Lorraine Anderson at [landerson@venicegov.com](mailto:landerson@venicegov.com) or 941-882-7401.

**Radio:** WENG 1530 AM, ClearChannel 1230 AM.

**TV:** Sarasota County Emergency Management on government access TV Comcast Channel 19 and Frontier Channel 32, SNN Comcast Channel 6, and ABC Channel 7.

**Online:** Department of Community Affairs: [www.dca.state.fl.us](http://www.dca.state.fl.us)

Division of Emergency Management: [www.floridadisaster.org](http://www.floridadisaster.org)

City's website: [www.venicegov.com](http://www.venicegov.com)

County's website: [www.scgov.net](http://www.scgov.net)

**Facebook:** Go to [www.facebook.com/CityofVeniceFlorida](http://www.facebook.com/CityofVeniceFlorida) (or search for Venice, Florida Municipal Government) and Like and Follow the page so our posts will show in your feed.

**Twitter:** @CityofVeniceFL

NOAA weather radio signals which provide storm warnings. These special radios may be purchased at home improvement stores.

Finally, know that going to a hurricane evacuation center (shelter) should be your LAST-RESORT option. These centers have 1 goal: To keep you alive through a storm event. You will have limited space, cots will not be provided, and meals may be delayed. Make a plan to stay with a neighbor, friend or relative NOW. If you do intend to stay at a shelter, review your options on page 6 and take a trip there now, so you'll be familiar with the route.

## What the City will be doing

When a hurricane watch is announced, the City of Venice immediately initiates its hurricane plan. **Decision makers meet.** Emergency services begin communicating with the county's Emergency Management department, while everyone keeps a close eye on the hurricane track. If the hurricane continues to threaten Southwest Florida, other activities begin. **Pick up and tie down.** Public Works personnel start to tie down and collect any city-owned items, such as trash cans and street furniture, including benches in parks and at the South Jetty. The Solid Waste division will collect trash until winds are too high for the activity to be safe, usually about 24 hours before the storm is expected to arrive. At that time, residents who have left garbage and recyclables on the curb should bring the materials inside so they don't get blown around and cause damage. The landfill will be closed. **Fuel up.** The Utilities Department begins its emergency preparations, provisioning fuel for generators and staging both equipment and employees. All departments fill gas tanks of all city vehicles. **More decisions.** Sarasota County Emergency Management will determine when evacuation centers (shelters) will open. The county's new transportation plan for evacuation centers goes into effect (see page 7), with residents having the ability to be bused to them from designated rally points. **Keep the flow.** Stormwater crews inspect outlets to make certain all are flowing. **Emergency declared.** The City Clerk prepares a declaration of emergency for the Mayor or City Manager to sign. This declaration is imperative if the City is to receive reimbursement from the Federal Emergency Management Agency (FEMA) in case there is damage to public property. **Batten down the hatches.** As the hurricane watch turns to a warning, building inspectors check to be sure all construction materials in the city have been secured. **NPODs ready to go.** The City's representative to the Neighborhood Points of Distribution, or NPODs, are prepared to distribute water, if needed, soon after a catastrophic landfall. **EOC activation.** The City's representatives to the county's Emergency Operations Center will

report for duty with supplies to enable them to work there for several days if necessary. Other critical personnel will report to Fire Station 3 to perform their duties throughout the storm and during post-storm activities. **On your own.** When winds reach a sustained 45 mph, emergency services can no longer respond due to the danger of high winds turning over firetrucks and other equipment. This ensures manpower and equipment will be available immediately after the storm for search and rescue and other emergency responses. **Recovery.** Once the storm has passed, the first effort toward recovery will center around health, safety and welfare. Police and Fire departments will begin making assessments of damage, initiate search-and-rescue operations, and look for downed wires and inoperative traffic signals. Public Works crews will begin clearing roads, the most critical those leading to the hospital. Utilities employees will check to be certain lift stations are functioning and water pipes are flowing. Generators will keep lift stations pumping. It is not unusual for tree roots to pull up pipes as they topple over in the wind. Airport personnel will clear the runways of debris and make sure all is in operating order as quickly as possible in order to facilitate relief efforts by air when some highways around the state may be closed. Florida Power & Light (FPL) will immediately begin to restore power to critical facilities such as hospitals, fire stations, water and wastewater plants, and police stations. It is not unusual for those in an area affected by a hurricane to be without power for days or even weeks. The City of Venice will make every effort to get back to business as usual as soon as possible. If City Hall is not usable, it is possible employees will relocate to another building such as the Venice Community Center. Storm debris will be collected in order of need for health and safety. The cleanup could take several weeks or longer depending on the intensity of damage. The City's goal is to complete the recovery process as quickly as possible within the City's financial constraints. It is essential that all residents help by taking care of their personal property.

## Secure your Property

The following are suggestions for making property the most hurricane resistant it can be:

- Cover windows with wood boards, hurricane shutters, or replace old windows with hurricane-resistant windows. When wind forces from hurricanes break windows, the resulting updraft can lift the roof off the structure. The opening also admits water from the storm, and broken glass can create a hazard.
- Either purchase professionally made hurricane reinforcement for the garage door or reinforce it with wood 2-x-4s.
- Pick up all loose items in the yard and bring them inside. In 80 mph winds, even small items can become dangerous projectiles.
- Do not put garbage out at the curb for collection. Once winds reach a certain level, the county landfill will close, and it will not be safe for trucks to operate. Garbage cans and bags left outside then become hazards in the wind.

## Protect yourself with flood insurance

The City of Venice is an active participant in the National Flood Insurance Program Community Rating System. This allows City residents a discount on flood insurance purchased through National Flood Insurance Program.

Property in Venice located along low-lying and coastal regions can be vulnerable to flooding. Please contact the City's Engineering Department at 941-882-7412 or stop by City Hall, 401 W. Venice Ave., to learn if your property is located in a flood zone. You can also view the City's flood map online at [www.venicegov.com](http://www.venicegov.com).

Standard homeowner insurance policies do not include coverage for flood and wind. The National Flood Insurance Program offers flood insurance coverage to City residents. A 30-day waiting period prior to the beginning of coverage is required.

As you prepare for hurricane season, contact

your insurance agent to review your insurance coverage and information regarding the National Flood Insurance Program.

In the event you evacuate during a storm, remember to take your important documentation, including your insurance policies, insurance carrier contact information, and pictures of your home and contents, in a waterproof container. Before you leave, enact your pet plan, board up windows and glass doors, anchor loose yard objects or bring them inside, and lock your doors.

The integrity of the stormwater drainage system must be protected to ensure proper functioning during severe weather. It is illegal to obstruct ditches, swales or other drainage structures. If you notice someone blocking a stormwater runoff structure, please report it to the Engineering Department at 941-882-7410.



## Emergency Phone Numbers

### Venice Police Department

Non-emergency: 941-486-2444  
Immediate Emergency Only: 911

### Venice Fire Department

Non-emergency: 941-480-3030 Monday-Friday, 8 a.m.-4 p.m.  
After hours: 941-882-7510  
Immediate Emergency Only: 911

To report a water or sewer emergency: 941-486-2770

To report a power outage: Florida Power & Light: 1-800-4-OUTAGE (468-8243)

For non-emergency city information:

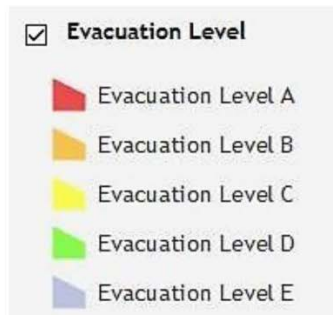
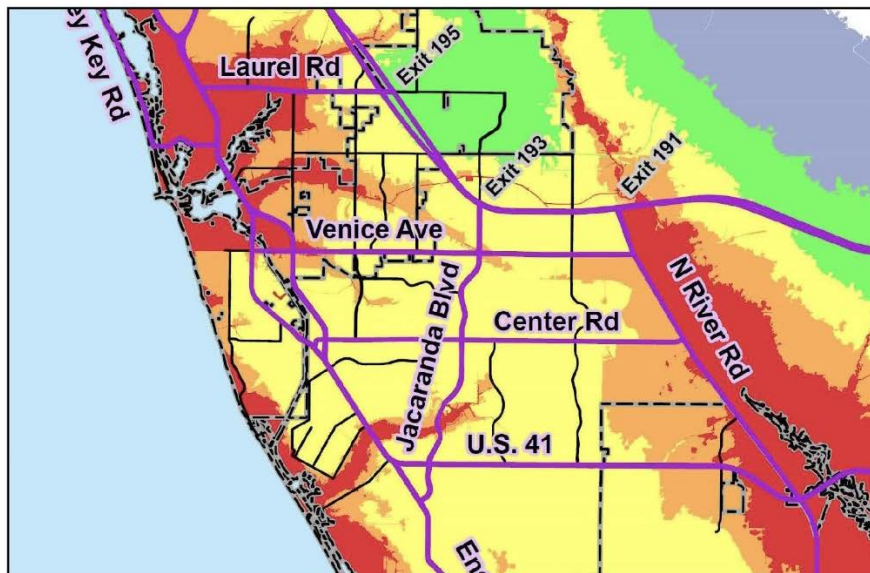
City Hall: 941-486-2626, Monday-Friday, 8 a.m.-4 p.m.

Sarasota County Call Center: 941-861-5000

## Evacuation Levels and Centers



## Evacuation Levels for the Venice Area



POTENTIAL STORM SURGE  
HEIGHT THRESHOLDS  
(IN FEET)

A=10 B=14 C=18 D=26 E=32

Know the [Evacuation Level](https://ags2.scgov.net/KnowYourZone/) for your home! Visit <https://ags2.scgov.net/KnowYourZone/> and type your street address in the top right search bar.

## Evacuation Center (hurricane shelter) information

**In the event of a hurricane watch, Sarasota County will open all identified evacuation centers (hurricane shelters) at the same time.**

All evacuation centers will be pet friendly. Your dog or cat must be kept in a carrier. Hurricane evacuation centers are not hotels and will not be able to provide any conveniences or luxuries. You will have no privacy, limited space approximately 20 square feet per person in a public classroom or hallway, and meal service may be delayed. Evacuation centers cannot provide bedding, cots or blankets.

- Going to an evacuation center should always be considered a last-resort measure.
- Never go to an evacuation center until local officials announce it is open.
- Evacuation center information will be updated on the county and city websites (scgov.net and venicegov.com), on local radio and television stations and on the county and city Facebook and Twitter accounts.

Hurricane Evacuation Centers Address	
<b>North Port High School</b>	6400 W. Price Blvd, North Port
<b>Heron Creek Middle School</b>	6501 W Price Blvd., North Port
<b>Woodland Middle School</b>	2700 Panacea Blvd., North Port
<b>Atwater Elementary School</b>	4701 Huntsville Ave., North Port
<b>Fruitville Elementary School</b>	601 Honore Ave., Sarasota
<b>Brookside Middle School</b>	3636 S. Shade Ave., Sarasota
<b>Southside Elementary School</b>	1901 Webber St., Sarasota
<b>Riverview High School</b>	1 Ram Way, Sarasota
<b>Booker High School</b>	3201 N. Orange Ave., Sarasota
<b>Philippi Shores Elementary School</b>	4747 S. Tamiami Trail, Sarasota
<b>Gulf Gate Elementary School</b>	6500 S. Lockwood Ridge Road, Sarasota

## What to Bring to an Evacuation Center

- Flashlight (in case your center loses power).
- Your insurance, Medicare or Medicaid cards, driver license or photo I.D.
- Your children's immunization and other important health and insurance records.
- Each family member's medications, along with dosage information and physician's contact information.
- Drinking water.
- Snacks or special foods.
- Bedding and pillows.
- Book or electronic entertainment items with headphones and chargers.
- Change of clothing.
- Personal hygiene items (including toilet paper).
- Games/comfort items for children.

## Transportation Plan for Hurricane Evacuation Centers

If you cannot drive to an evacuation center:

Sarasota County will provide bus transportation for you and your pets (along with a limited amount of supplies) to and from a general population evacuation center. This program is activated only when Sarasota County has a declared county emergency, an activation is ordered, and evacuation centers are opened. Transportation will be offered at designated **rally points** throughout the county.

*Keep in mind ...*

- Transportation will be provided by Sarasota County Area Transit and school district buses.
- Space on buses will be limited.
- Baggage is limited to two carry-on sized bags per person that can be stored under a seat or held in lap.
- Pets must be in a crate or carrier, and you must bring all pet supplies.
- Passengers cannot specify what shelter they will be transported to. Your return home could be delayed.

***Important:*** All transportation will cease when landfall is expected within eight hours.



Venice area rally points include: **Venice Community Center**, 326 Nokomis Ave. S., Venice; **Garden Elementary School**, 700 Center Road; Venice; **Taylor Ranch Elementary**, 2500 Taylor Ranch Trail, South Venice (off U.S. 41); **Laurel Park**, 509 Collins Road, Nokomis; and **Pine View School**, 1 Python Path, Osprey. Go to [scgov.net](http://scgov.net) for a full list.

If you can drive to a rally point:

- Drive locally to a rally point and park vehicle.
- Receive transportation to an evacuation center.

No registration needed. Information/instruction will be provided at rally point.



### Bus route:

Pick-up transportation to a rally point and center via Sarasota County Area Transit disaster bus route (SCAT's modified Sunday bus route). Visit [scgov.net](http://scgov.net) for schedules.



### Register for public transportation:

- For those who cannot drive or otherwise be transported by family, friends or neighbors, the county will provide last-resort, free bus transportation for you and your pets (along with a limited amount of supplies) to and from a general population evacuation center. Transportation will be offered at designated rally points.
- Complete the online registration form at [scgov.net](http://scgov.net) (keywords transportation plan). All county libraries are available to help with online registration for those without a computer. You can also call 941-861-5000.
- The form will include guidance for those who cannot drive or walk to a designated rally point. **Rally points may change depending on the severity of a storm.** Residents who preregister will receive an automated telephone message with information about the location of rally points and when they will be picked up.

**Important:** The online registration process will cease when landfall is expected within 60 hours.

If you have special medical needs (require an oxygen tank, a lift assist from a wheelchair, etc.), you must register separately as a medically dependent person. This can be done now at [scgov.net](http://scgov.net), or call 941-861-5000.

Note: There are currently no evacuation centers (hurricane shelters) in the City of Venice, **only rally points, where residents can be transferred to shelters.**

## After the Storm Subsides

After the storm, it is possible electric and phone services may not be available up to several weeks. Fuel may not be available, and transportation of groceries and other necessities may not be possible right away. The following items will be helpful to have beforehand:

- Cash and rolls of quarters.
- Two weeks' worth of bottled water and nonperishable food, along with a manual can opener. Plan on 1 gallon of water, per person, per day, plus a gallon of water per pet, per day.
- A flashlight for each member of the family, as well as extra batteries.
- First-aid book and first-aid kit.
- A cooler for food and another for ice.
- Plastic tarp for temporary roof or window repair.
- Plastic garbage bags.
- Mops, buckets, towels and disinfectant.
- Items for infants, children and pets.

**Remember: Among the greatest dangers after a hurricane are downed power lines. Do not walk near or drive over any wires lying on the ground.**

**Do not allow children — or adults — to play in standing water after an event, as the water may be contaminated or harbor vermin like ants and snakes.**

### Cleaning up

To help the city clean up waste after a storm:

- Separate garbage, construction debris, vegetation, household waste, white goods and electronics, and place them in separate piles at the curb.
- Refrigerators, freezers, washers and

dryers must have doors removed.

- Keep all debris for collection close to the road, just as you do during regular collections, and do not pile anything against trees or poles, or under wires.

### What items go in which piles?

**Garbage:** Spoiled food or contaminated recyclables, such as wet cardboard and paper, should be placed in cans or plastic bags and put at the curb.

**Construction debris:** Structural debris and bulky waste like building materials, drywall, lumber, carpet, furniture, mattresses and plumbing materials.

**Vegetation:** Yard waste such as tree branches, leaves and logs should be in one pile.

**Household hazardous waste:** Oil, batteries, pesticides, oil-based paints and stains, cleaning supplies, lawn chemicals and compressed gas.

**Appliances:** Refrigerators, washers, dryers, freezers, air conditioners, stoves, water heaters and dishwashers. Remove all contents, such as food, clothes and dishes, and remove doors from the appliances.

**Electronics:** Televisions, computers, radios, stereos, DVD players, phones and other devices.

### You can help emergency services by:

- Being prepared to be independent for several days
- Making sure you have enough of your medications to continue taking them as prescribed
- Avoid swimming or surfing in the Gulf due to rip tides
- Refrain from driving until roads are cleared of debris and downed lines
- Follow the move over law. Move into the next lane or slow down for parked emergency vehicles.



## Do you have a Pet Plan?

Whether you stay at home or go to a shelter (all are pet friendly in Sarasota County), here are some tips to help your furry friends weather the storm:

- Have a pet carrier and a kennel available. Your pet should be comfortable staying in the kennel for a few days.
- Do not leave your pet outside during or after the storm.
- Be sure your pet has current vaccinations and a collar with license and rabies tags, as well as an identification tag.
- Prepare an easily cleaned area away from windows to keep pets during the emergency. Animals with microchips for identification have a much better chance of being returned to their owners if they become separated.
- During the storm, separate pets from each other, even if they are friendly and accustomed to being together.
- Calming products such as a Thundershirt (pictured above) may help ease your pet's anxiety. These should be tried out on your pet when they are already calm, before a storm event.
- Some public shelters allow pets; they will be placed in a kennel area away from the general public. Bring your pet's food, water, collar and leash, medicine and waste bags, and be prepared to care for your pet while at the shelter. The pet-friendly shelters will be announced at the time they are opened.
- Stock up on pet food, newspapers, cat litter, plastic bags, disinfectant and other supplies for use after the storm. You may be without electricity for up to several weeks, and gasoline and grocery supplies may be scarce.

## Home Sweet Home: Make it Strong

There are several things you can do to make your home more capable of surviving hurricane-force winds:

- Anchor the roof: If built before 1994, a gabled roof should be braced at the ends with horizontal and vertical beams. Wood sheathing should be behind the stucco of the triangular gable end walls.
- Brace entry and garage doors with foot and head bolts with a minimum 1-inch bolt throw length. The failure of the entry or garage door causes about 80 percent of residential hurricane damage. It may be worth the investment to purchase hurricane-resistant doors.
- Protect windows with high-impact shutters or boards. Pick up anything outside that can be blown through a window in high winds.
- Have a safe room — preferably one in the center of the home without windows or glass doors. It can be a bathroom, hallway or closet.



- Begin collecting all loose items from your yard and porch, including lanais and pool cages. Even small items picked up by strong winds can break a window or lodge in a roof or other part of a structure.
- Install shutters or plywood over your windows.
- Make sure your vehicle's gas tank is full.
- Have cash on hand.
- Do laundry.
- Fill the bathtub with water.
- Fill an ice chest or cooler with ice.
- Charge cellphone batteries.

#### During the storm:

- Know that at sustained 45 mph winds, emergency services, including ambulances, will NOT respond to calls until conditions subside.
- Remember that a hurricane has two parts. Often when the eye passes over, it is very calm and sometimes people think the storm is over.

#### Immediately after the storm, stay inside because:

- There may be contaminated flood waters, as well as potholes or live electrical wires under flood waters that cannot be seen.
- Most traffic signals will not be functioning.
- Emergency services need the roads as clear as possible to respond to the number of calls they will get.
- Snakes, rats, ants and other vermin will be displaced from their usual habitat and try to share yours.

#### Additionally ...

- Do not swim or surf in the Gulf waters because there will likely be dangerous rip tide currents.
- Plan for being in heat without air-conditioning for an extended amount of time.

