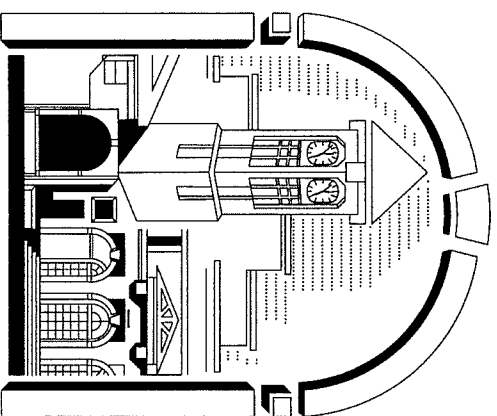


STANDARD DETAILS

EFFECTIVE FEBRUARY 15, 2012



VENICE CITY COUNCIL

Thomas "Kit" McKeon - Vice Mayor
 Jim Bennett
 Emilio Carlesimo
 Robert Daniels
 Jeanette Gates
 Dave Sherman

MAYOR

John Holic

CITY MANAGER

Edward Lavallee

UTILITIES DIRECTOR

Lenox Bramble, PE

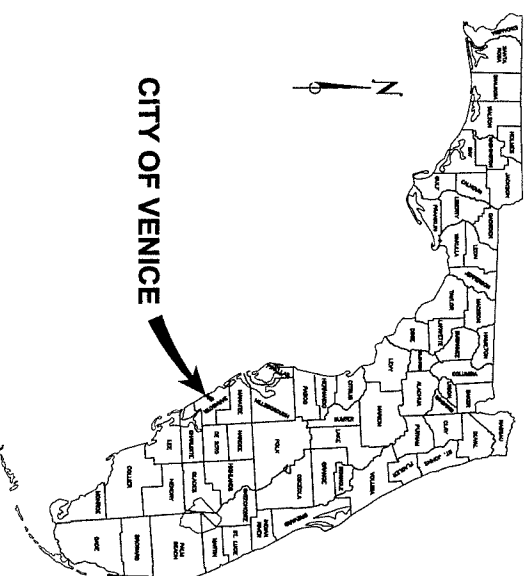
CITY ENGINEER

Kathleen J. Weeden, PE, CFM, LEED AP®

City Of Venice Engineering Department

401 West Venice Avenue
 Venice FL 34285

Ph. 941-486-2626
 Fax 941-480-3031



INDEX OF SHEETS STANDARD DETAILS

<u>DRAWING NO.</u>	<u>SHEET NO.</u>	<u>DESCRIPTION</u>
T-1	1 of 13	TITLE PAGE
G-1	2 of 13	GENERAL NOTES AND TESTING REQUIREMENTS
PS-1	3 of 13	PAVING AND SIDEWALK DETAILS
DS-1	4 of 13	DRAINAGE AND STORMWATER DETAILS
WSR-1	5 of 13	WATER, SEWER, AND REUSE DETAILS
WSR-2	6 of 13	WATER, SEWER, AND REUSE DETAILS
WSR-3	7 of 13	WATER, SEWER, AND REUSE DETAILS
MISC-1	8 of 13	MISCELLANEOUS

STANDARD WASTEWATER LIFT STATION DETAILS

LS-1	9 of 13	LIFT STATION PLAN & SECTION
LS-2	10 of 13	LIFT STATION SCHEDULE
LS-3	11 of 13	ELECTRICAL DETAILS
LS-4	12 of 13	LIFT STATION LAYOUT AND CONTROL PANEL
LS-5	13 of 13	PACKAGE LIFT STATION



48 HOURS BEFORE YOU DIG
 CALL SUNSHINE
1-800-432-4770 or 811
 IT'S THE LAW IN FLORIDA
 FL STATUTE 683.951 (1979) REQUIRES
 MIN. OF 2 DAYS AND MAX. OF 5 DAYS
 NOTICE BEFORE YOU EXCAVATE.

No.	Date	Revision	BY	DATE:
1	1/1/2008	2008 UPDATE	JW	2/15/2012
2	1/15/2009	2009 UPDATE	MG	DRAWN BY:
3	1/15/2010	2010 UPDATE	MG	M.T.
4	1/15/2011	2011 UPDATE	MG	CHECKED BY:
5	1/15/2012	2012 UPDATE	MT	K.W.
6	2/15/2012	2012 UPDATE	MT	SCALE: AS SHOWN

2012 STANDARD DETAILS TITLE PAGE

CITY OF VENICE ENGINEERING DEPARTMENT

401 WEST VENICE AVE.
 VENICE FL 34285
 (941) 486-2626
 FAX (941) 480-3031



FILE NO.
1030 122

SHEET
1 OF 13
 T-1

- 1) THESE CITY STANDARD DETAILS ARE INTENDED TO SERVE AS A CURRENT SET OF GUIDELINES AND STANDARDS ACCEPTABLE TO CITY STAFF. THESE DETAILS, INCLUDING BUT NOT LIMITED TO ALTERNATIVE MATERIALS, SUPPLIERS, OR MANUFACTURERS MAY BE SUBMITTED, BUT ARE SUBJECT TO FINAL APPROVAL BY THE CITY ENGINEER.
- 2) THESE DETAILS ARE UPDATED AND REISSUED IN JANUARY OF EACH CALENDAR YEAR. HOWEVER, DUE TO UNIQUE CIRCUMSTANCES, CHANGES OR MODIFICATIONS MAY BE REQUIRED BY CITY STAFF AT ANY TIME.
- 3) THESE DETAILS ARE INTENDED TO MEET ALL CURRENT MATERIALS FOR CONSTRUCTION QUALIFICATIONS OF FOOT AS WELL AS APPLICABLE ASTM STANDARDS, LATEST REVISIONS.
- 4) ALL CONSTRUCTION WITHIN THE CITY OF VENICE SHALL MEET THE APPLICABLE TESTING REQUIREMENTS LISTED IN DETAIL 4.
- 5) MAINTENANCE OF TRAFFIC (MOT) PLAN, IF APPLICABLE, SHALL BE SUBMITTED WITH THE CONSTRUCTION PLANS TO THE CITY ENGINEERING DEPARTMENT.
- 6) THE CITY ENGINEERING DEPARTMENT ISSUES THE FOLLOWING PERMITS:
 - a) SITE PREPARATION PERMIT - BEFORE ANY ACTIVITY SUCH AS REMOVAL OF VEGETATION, SITE GRADING, DELIVERY OF FILL, OR GROUND BREAKING, THE PROPER SITE PREPARATION PERMIT WILL BE ISSUED BY THE CITY ENGINEER. THE PROPER SITE ACTIVITY IS TO BE SUBMITTED TO THE CITY-APPROVED POLLUTION PREVENTION PLAN IS IN PLACE. A SITE PREPARATION PERMIT WILL BE ISSUED BY CITY ENGINEERING STORMWATER UPON APPROVAL OF THE POLLUTION PREVENTION PLAN AND SUBMITTAL OF STAMPED APPROVED SWFWD PLANS INCLUDING THE ENVIRONMENTAL RESOURCES PERMIT APPROVAL AND A NOTICE OF INTENT (NOI) LETTER, A COPY OF THE SARASOTA COUNTY TREE REMOVAL PERMIT WILL BE REQUIRED PRIOR TO ISSUANCE OF SITE PREPARATION PERMIT. CONTACT SARASOTA COUNTY NATURAL RESOURCES TO APPLY FOR THE PERMIT.
 - b) CONSTRUCTION PERMIT - THE CONSTRUCTION PERMIT ALLOWS FOR ALL OTHER SITE IMPROVEMENTS NOT INCLUDED WITHIN A SITE PREPARATION PERMIT. REQUIREMENTS FOR THIS PERMIT ARE DISCUSSED IN DETAIL 4.
 - c) RIGHT-OF-WAY PERMIT - THIS PERMIT IS ISSUED FOR ANY CONSTRUCTION WITHIN THE CITY'S RIGHT-OF-WAY.
- 7) FORMS FOR THE ABOVE PERMITS ARE AVAILABLE AT THE CITY ENGINEERING DEPARTMENT OR IN THE ENGINEERING DEPARTMENT SECTION OF WEBSITE @ www.venicegov.com
- 8) A PRE-CONSTRUCTION CONFERENCE SHALL BE CONDUCTED BY EITHER THE PROJECT ENGINEER OF RECORD (EOR) OR CONSTRUCTION MANAGER AT A TIME AND PLACE ACCEPTABLE TO ALL PARTIES INVOLVED IN THE CITY DEPARTMENT RESPONSIBILITIES, AND OTHER RELATED CONSTRUCTION REQUIREMENTS, AND SHOP DRAWINGS MUST BE APPROVED BY THE ENGINEER OF RECORD (EOR) PRIOR TO SUBMISSION TO THE CITY ENGINEERING DEPARTMENT FOR REVIEW. EACH SHEET OF THE SUBMITTAL WILL BE INDIVIDUALLY STAMPED AND INITIALED BY THE EOR. SHOP DRAWINGS SUBMITTED FOR REVIEW SHOULD BE INCLUSIVE AND COMPREHENSIVE. ANY CONSTRUCTION PRIOR TO THE REVIEW AND ACCEPTING PROCESS IS SUBJECT TO REMOVAL AT THE CONTRACTORS EXPENSE.
- 9) THE CITY OF VENICE UTILITIES DEPARTMENT WILL OPERATE ALL WATER VALVES.

1 GENERAL REQUIREMENTS AND CITY PERMITS

- 1) **ROADWAYS**
ALL ROADWAYS SHALL BE TESTED IN ACCORDANCE WITH CITY OF VENICE STANDARD DETAILS 2012 & 2000 FOOT SPECIFICATIONS.
 - a) **GRAVITY SEWER MAIN**
 - 1) COMPACTATION TESTING
 - SHALL BE PERFORMED ON THE UPSTREAM AND DOWNSTREAM SIDE OF EACH MANHOLE STRUCTURE.
 - SHALL BE PERFORMED AT THE MID-POINT OF EACH RUN OF PIPE INSTALLED.
 - SHALL BE PERFORMED ON THE SPONGE OF THE SPRINGLINE OF THE PIPE AND ALTERNATE SIDES OF THE PIPELINE WITH EACH FOOT.
 - SHALL BE MINIMUM OF 98% OF MAXIMUM COMPACTION UNDER PAVEMENT, 95% OF MAXIMUM COMPACTION UNDER OTHER SURFACES AS DETERMINED BY AASHTO METHOD T-180.
 - 2) DEFLECTION TESTING (MANHOLE)
 - SHALL BE PERFORMED IN ACCORDANCE WITH ASTM D3034, LATEST REVISION.
 - PROVIDE 48 HOUR ADVANCE NOTICE TO THE CITY OF VENICE ENGINEERING DEPARTMENT (941) 486-2626, EXT. 25003.
 - SHALL BE PERFORMED IN ACCORDANCE WITH ASTM D3034, LATEST REVISION.
 - PROVIDE 48 HOUR ADVANCE NOTICE TO THE CITY OF VENICE ENGINEERING DEPARTMENT (941) 486-2626, EXT. 25003.
 - 3) AIR TEST GRAVITY LINES AND SERVICES
 - THE MAXIMUM PRESSURE DROP ALLOWABLE SHALL BE ONE (1) POUND PER SQUARE INCH (PSIG). REFER TO AIR TEST TABLE, DETAIL "S", SHEET W-8.3. THE MINIMUM INITIAL TEST PRESSURE SHALL BE THREE AND A HALF (3 1/2) POUNDS PER SQUARE INCH (PSIG) EXCEPT WHEN TESTING IN AREAS WITH HIGH WATER TABLES. FOR EVERY FOOT OF GROUNDWATER ABOVE THE SPRINGLINE OF THE PIPE, INCREASE THE TEST PRESSURE BY (0.43 PSIG). MAXIMUM TEST PRESSURE SHALL BE NINE (9) POUNDS PER SQUARE INCH (PSIG). ADVANCE NOTICE TO THE CITY OF VENICE ENGINEERING DEPARTMENT (941) 486-2626, EXT. 25003.
 - 4) TELEVISION INSPECTION
 - UPON CONSTRUCTION COMPLETION, ANY DEFLECTION CAUSING A DEPTH OF WATER GREATER THAN 1/2" IS UNACCEPTABLE AND MUST BE REPAIRED OR REPLACED.
 - AT TIME OF ONE-YEAR WARRANTY INSPECTION, ANY DEFLECTION CAUSING A DEPTH OF WATER GREATER THAN 1/2" IS UNACCEPTABLE AND MUST BE REPAIRED OR REPLACED.
 - 2) **STORM SEWERS** SHALL BE TESTED AS PER FOOT SPECIFICATIONS AND INCLUDE
 - a) COMPACTION TESTING IN CONFORMANCE WITH SECTION 2.4 ABOVE.
 - b) THE OWNER SHALL PROVIDE A VIDEO TAPE OF THE CAMERA INSPECTION FOR ALL DRAINAGE PIPING BEING CONDUCTED WITHIN ONE YEAR AND SHALL BE COMPLETED WHEN THE GROUND WATER IS AT OR ABOVE NORMAL ELEVATION.
 - c) ALL JOINTS OF PIPE JOINTS MUST BE GASKETED AND WRAPPED WITH FILTER CLOTH.
 - 3) **STORM SEWERS** SHALL BE TESTED AS PER FOOT SPECIFICATIONS AND INCLUDE
 - a) STORM SEWERS SHALL BE TESTED AS PER FOOT SPECIFICATIONS AND INCLUDE
 - 1) COMPACTION TESTING IN CONFORMANCE WITH SECTION 2.4 ABOVE.
 - 2) TURNED OVER TO THE CITY PRIOR TO ACCEPTANCE OF THE IMPROVEMENTS. VIDEO INSPECTION SHALL BE CONDUCTED WITHIN ONE YEAR AND SHALL BE COMPLETED WHEN THE GROUND WATER IS AT OR ABOVE NORMAL ELEVATION.
 - 3) ALL JOINTS OF PIPE JOINTS MUST BE GASKETED AND WRAPPED WITH FILTER CLOTH.
 - 4) **PRESSURE MAINS (POTABLE, RECLAIMED, FORCE MAINS)**
 - a) COMPACTION TESTING SHALL BE PERFORMED EVERY 250 FEET.
 - 1) PRESSURE TEST MAINS: ALL AIR MUST BE EXCELLED FROM THE PRESSURE MAIN.
 - TEST PRESSURE SHALL BE:
 - WATER (POTABLE & RECLAIMED) MAINS: 150 PSI
 - FORCE MAINS (WASTEWATER) MAINS: 100 PSI
 - 2) TEST PRESSURE SHALL BE CALCULATED WITH THE FOLLOWING:
 - ALLOWABLE LEAKAGE SHALL BE CALCULATED WITH THE FOLLOWING:
 - PRESSURE TEST (TRAPPING SLEEPER & VALVE)
 - SHALL BE IN CONFORMANCE WITH DETAIL 5, SHEET 5 OF THESE CITY DETAILS.
 - BACTERIOLOGICAL TESTING OF POTABLE MAINS SHALL BE COORDINATED THROUGH COV UTILITIES DEPT. CONDUCTED WITH STATE OF FLORIDA DEPARTMENT OF HEALTH. BACTERIAL SAMPLE SHALL BE TAKEN BY A CERTIFIED LABORATORY OR FOSH PERSONNEL ONLY.
 - FOR ALL WATER NEEDED FOR FLUSHING, PRESSURE TESTING OR BACTERIOLOGICAL SAMPLING, PLEASE ADVANCE NOTICE TO THE CITY OF VENICE UTILITIES DEPARTMENT (940-3333). THE CITY WILL PROVIDE ADVANCE NOTICE TO THE CITY OF VENICE UTILITIES DEPARTMENT (940-3333). THE DISINFECTING OF WATER MAINS MUST FOLLOW ANSI/MWA 69.49 AND MUST BE WITNESSED BY CITY UTILITIES DEPT. FOR REVIEW & APPROVAL PRIOR TO SCHEDULING DISINFECTION.
 - FORCE MAINS SHALL BE A MINIMUM OF 4" IN DIAMETER.
 - 5) **BACKFLOW ASSEMBLIES**
 - a) BACKFLOW ASSEMBLIES SHALL BE TESTED UPON INSTALLATION BY A CERTIFIED PLUMBER & RESULTS SUBMITTED TO THE UTILITIES DEPARTMENT WITHIN 72 HOURS.
 - b) COORDINATE WITH DISTRIBUTION DIVISION FOR A LIST OF INDEPENDENT INSPECTION SERVICE PROVIDERS.

4 TESTING REQUIREMENTS

CITY OF VENICE STAFF		POSITION	SERVICES PROVIDED	PHONE NUMBER
		CITY ENGINEER	ADMINISTRATION AND FINAL APPROVAL	(941) 486-2626
		ENGINEERING PROJECTS COORDINATOR	PERMITS, TURNOVER PACKAGES	(941) 486-2626
		DESIGNER	CONSTRUCTION OBSERVATION	(941) 486-2626
		UTILITIES DIRECTOR	MAVS, DETAIL SHEETS	(941) 486-2626
		FIELD OPERATION SUPERVISOR	FINAL SHEETS APPROVAL	(941) 486-3333 X224
		UTILITIES FIELD SUPERVISOR	PLAN REVIEW, UTILITIES INSPECTIONS, COST ESTIMATES, METERS, PLAN REVIEW WASTEWATER ONLY, LOCATES FOR CITY UTILITIES, UTILITIES FIELD SUPERVISOR	(941) 486-27882229

FLORIDA DEPARTMENT OF HEALTH (FDOH)

1005 SARASOTA CENTER BLVD
SARASOTA, FL 34232

CONSTRUCTION OF ANY WATER MAIN OR EXTENSION OF AN EXISTING SYSTEM (INCLUDING FIRE SERVICES) IS REQUIRED TO SUBMIT FDEP FORM 62-555.9007(1) NOTICE OF INTENT TO USE TO THE FLORIDA DEPARTMENT OF HEALTH (FDOH) FOR REVIEW AND APPROVAL. THIS FORM IS AVAILABLE IN ELECTRONIC FORMAT AT THE FOLLOWING WEB ADDRESS: <http://www.doh.state.fl.us/water/watermain/extension.htm>

A CERTIFICATE OF CONSTRUCTION COMPLETION AND REQUEST FOR CLEARANCE TO PLACE PERMITTED DWS COMPONENTS INTO OPERATION, (FDEP FORM 62-555.9008(1)) AND INTERMEDIATE RECORD DRAWINGS MUST BE SIGNED, SEALED, AND SUBMITTED BY THE EOR (ENGINEER OF RECORD) TO FDOH. PLEASE CONTACT THE DEPARTMENT OF HEALTH FOR MORE INFORMATION. RECORD DRAWINGS MUST BE SIGNED, SEALED, AND SUBMITTED BY THE EOR TO FDEP. PLEASE CONTACT THE DEPARTMENT OF ENVIRONMENTAL FLORIDA DEPARTMENT OF ENVIRONMENTAL PROTECTION (FDEP)

SARASOTA COUNTY ENVIRONMENTAL SERVICES
WATER RESOURCES
1001 SARASOTA CENTER BLVD
SARASOTA, FL 34232

CONSTRUCTION OF ANY WASTEWATER FACILITY OR EXTENSION OF AN EXISTING SYSTEM IS REQUIRED TO SUBMIT FDEP FORM 62-904.300(9)(1) NOTIFICATION/APPLICATION FOR CONSTRUCTION A DOMESTIC WASTEWATER COLLECTION/TRANSMISSION SYSTEM. THIS FORM IS AVAILABLE IN ELECTRONIC FORMAT AT THE FOLLOWING WEB ADDRESS: <http://www.dep.state.fl.us/water/watermain/extension.htm>, PLEASE SUBMIT APPLICATION TO THE ENGINEERING DEPT. PERMIT APPLICATION WILL NOT BE SIGNED BY THE UTILITIES DIRECTOR UNTIL THE PLANS HAVE BEEN APPROVED BY THE UTILITY AND ENGINEERING DEPARTMENTS.

A CERTIFICATE OF CONSTRUCTION COMPLETION FORM, REQUEST FOR APPROVAL, TO PLACE A DOMESTIC WASTEWATER TRANSMISSION SYSTEM INTO OPERATION (FDEP FORM 62-904.300(9)(1)) AND INTERMEDIATE RECORD DRAWINGS MUST BE SIGNED, SEALED, AND SUBMITTED BY THE EOR TO FDEP. PLEASE CONTACT THE DEPARTMENT OF ENVIRONMENTAL PROTECTION FOR MORE INFORMATION. PLEASE SUBMIT APPLICATION TO THE ENGINEERING DEPT. CERTIFICATE OF COMPLETION WILL NOT BE SIGNED BY THE UTILITIES DIRECTOR UNTIL THE RECORD DRAWINGS HAVE BEEN APPROVED BY THE UTILITY AND ENGINEERING DEPARTMENTS.

2 CONTACT PERSONNEL

- 1) RECORD DRAWINGS SHALL BE IN THE SAME FORMAT AS THE APPROVED CONSTRUCTION DRAWINGS (PLAN AND PROFILE). THE RECORD DRAWINGS SHALL BE ORIGINATED, SIGNED, AND SEALED BY THE EOR, IN ORDER TO VERIFY CONFORMANCE WITH THE DESIGNED AND APPROVED CONSTRUCTION PLANS. THIS CERTIFIED INFORMATION SHALL BE PROVIDED TO THE EOR BY A PROFESSIONAL SURVEYOR & MAPPER (PSM) LICENSED IN THE STATE OF FLORIDA. FDEP CERTIFICATION OF COMPLETION WILL NOT BE SIGNED BY UTILITIES MANAGER UNTIL RECORD DRAWINGS ARE APPROVED.
- 2) SHEETWORK, AS A MINIMUM, THE RECORD DRAWINGS SHALL CONSIST OF THE FOLLOWING:
 - a) MANHOLE DIMENSIONS SHALL BE PROVIDED FOR ALL IMPROVEMENTS TO BE TURNED OVER TO THE CITY UPON CONSTRUCTION COMPLETION. TYPICALLY, THIS INCLUDES PIPES, VALVES, AND EASEMENTS.
 - b) A MINIMUM OF TWO (2) SWING TESTS SHALL BE PROVIDED FOR ALL IMPROVEMENTS TO BE TURNED OVER TO THE CITY UPON CONSTRUCTION COMPLETION. TYPICALLY, THIS INCLUDES PIPES, VALVES, SWING THE TABLE SHOULD BE INCLUDED WITH CONSTRUCTION PLANS.
 - c) TOP OF PIPE ELEVATIONS AND FINISH GRADE ELEVATIONS SHALL BE PROVIDED AT A MAXIMUM OF 100 FOOT INTERVALS.
 - d) EASEMENTS, RIGHT-OF-WAYS AND PROPERTY LINES SHALL BE CORRECTLY SHOWN AND CONSISTENT WITH ANY RECORDED PLATS. IF A BLANKET EASEMENT HAS BEEN GRANTED, PLACE APPROPRIATE NOTE ON EACH PERTINENT PLAN SHEET.
- 3) RECORD DRAWING SUBMITTAL PROCEDURE:
 - a) SUBMIT THREE (3) COPIES TO THE CITY ENGINEER'S OFFICE AS PRELIMINARY RECORD DRAWING FOR REVIEW AND COMMENT BY CITY STAFF. ALL SEAGE PARTS SHALL BE DELIVERED TO THE CITY OF VENICE PRIOR TO RECORD DRAWING REVIEW. REFERENCE SHEET IS.3, DETAIL 4, NOTE 4, FIELD VERIFICATION OF SAID IMPROVEMENTS WILL BE CONDUCTED AT THIS TIME.
 - b) UPON INTERACTION OF CITY COMMENTS, SUBMIT THREE (3) ORIGINAL SETS OF FINAL RECORD DRAWINGS, WITH EOR SIGNATURE AND SEAL TO THE CITY ENGINEER'S OFFICE.
 - c) SUBMIT, IN AUTOCAD FORMAT, ALL ELECTRONIC FILES NECESSARY TO PRINT/PLOT THE RECORD DRAWINGS. THIS SHALL BE PROVIDED ON CD-ROM. ELECTRONIC FILES FORMAT SHALL CONFORM WITH THE CITY OF VENICE LINE LEGEND FOR RECORD DRAWINGS. (SEE SHEET 8).
 - d) THE EOR (ENGINEER OF RECORD) SHALL SUBMIT SWFWD STORMWATER RECORD DRAWINGS AND ("STATEMENT OF COMPLETION FORM AND REQUEST TO TRANSMIT TO OPERATION") A CERTIFICATE OF OCCUPANCY (C.O.) SHALL NOT BE GRANTED IF THE ABOVE RECORD DRAWING SUBMITTAL REQUIREMENTS HAVE NOT BEEN MET.

5 RECORD DRAWING REQUIREMENTS

UPON CONSTRUCTION COMPLETION, PORTIONS OF THE PROJECT THAT WILL BE MAINTAINED BY THE CITY MUST BE TURNED OVER TO THE CITY. CITY ACCEPTANCE OF IMPROVEMENTS, SUCH AS WATER, RECLAIMED, SEWER, STORMWATER SYSTEMS AND ROADWAYS, REQUIRE THAT ALL IMPROVEMENTS BE CONSTRUCTED IN ACCORDANCE WITH THE LATEST VERSION OF THE CITY STANDARD DETAILS AND SUBMITTAL OF ALL REQUIRED TURNOVER PACKAGE DOCUMENTATION. A CO WILL NOT BE ISSUED UNTIL THE TURNOVER OF PUBLIC IMPROVEMENTS IS COMPLETED. REQUIRED TO HAVE THE PLAT REVERSED FOR CONFORMITY WITH PLAT STATUTES BY A PROFESSIONAL SURVEYOR AND MAPPER CONTRACTED OR EMPLOYED BY THE CITY AND PLAT MAY BE SENT TO CITY COUNCIL FOR APPROVAL.

• ALL REQUIRED TURNOVER PACKAGE DOCUMENTATION MUST BE SUBMITTED TO THE CITY ENGINEERING DEPARTMENT A MINIMUM OF TWO WEEKS PRIOR TO THE CITY COUNCIL'S MEETING. TURN OVER MEETINGS ARE NORMALLY HELD ON THURSDAY, THE DEADLINE FOR SUBMITTAL OF COMPLETE TURNOVER PACKAGES IS 4 P.M. ON THE THURSDAY TWO WEEKS PRIOR TO THE CITY COUNCIL MEETING. A COPY OF THE CITY COUNCIL CALENDAR IS AVAILABLE ONLINE AT www.venicegov.com.

A COMPLETE TURNOVER PACKAGE INCLUDES ALL OF THE FOLLOWING ITEMS IF APPLICABLE TO THE PROJECT:

- a) BILL OF SALE FOR THE LINES, AND/OR SYSTEMS
- b) AFFIDAVIT OF NO LIENS
- c) CERTIFICATE OF CONTRIBUTIONS IN AID OF CONSTRUCTION
- d) FINAL COST LETTER & COST BREAKDOWN WORKSHEET (VERIFICATION OF FINAL COSTS)
- e) COPY OF PLAT (IF NEW SUBDIVISION, OR IF EXISTING IS RE-DIVIDED)
- f) CONTRACTUAL GUARANTEES FROM OWNER
- g) EASEMENTS GRANTING RIGHT OF ACCESS TO LINES AND/OR SYSTEMS WITHIN PRIVATE PROPERTY
- h) A MAINTENANCE BOUND IN THE AMOUNT OF AT LEAST 1% OF THE COST OF CONSTRUCTION OF COMPLETE TURNOVER PACKAGES
- i) A STATEMENT OF WORK AND SCHEDULE
- j) DATE OF ACCEPTANCE BY THE CITY
- k) DECLARATION OF MAINTENANCE RESPONSIBILITIES
- l) SIGNED AND SEALED FINAL RECORD DRAWINGS AND SUBMITTAL PROCEDURE.

FOR THE RECORD DRAWING REQUIREMENTS AND SUBMITTAL PROCEDURE, RECORD DRAWINGS MUST BE APPROVED BY THE ENGINEERING AND UTILITY DEPARTMENTS PRIOR TO PROCESSING COMPLETION CERTIFICATIONS FOR FDEP OR DOH. MINOR CORRECTIONS TO THE SUBMITTAL PACKAGE WILL BE ALLOWED UNTIL FRIDAY OF THE SUBMITTAL WEEK TWO WEEKS PRIOR TO COUNCIL MEETING AT 4 P.M. NO FURTHER ITEMS WILL BE ACCEPTED BY THE ENGINEERING DEPARTMENT AFTER 4 P.M. ON FRIDAY. AN INCOMPLETE TURNOVER PACKAGE WILL NOT BE PLACED ON THE COUNCIL AGENDA FOR THE NEXT SCHEDULED MEETING.

• OWNER TO EXPEDITE THE RECORD DRAWING AND TURNOVER PROCESS, PLEASE VERIFY THAT RECORD DRAWINGS ARE ACCURATE AT FIRST SUBMITTAL. RECORD DRAWINGS MUST BE REVERSED BY THE ENGINEERING DEPARTMENT AND UTILITY DEPARTMENTS PRIOR TO PROCESSING COMPLETION CERTIFICATIONS FOR FDEP OR DOH. MINOR CORRECTIONS TO THE SUBMITTAL PACKAGE WILL BE ALLOWED UNTIL FRIDAY OF THE SUBMITTAL WEEK TWO WEEKS PRIOR TO COUNCIL MEETING AT 4 P.M. NO FURTHER ITEMS WILL BE ACCEPTED BY THE ENGINEERING DEPARTMENT AFTER 4 P.M. ON FRIDAY. AN INCOMPLETE TURNOVER PACKAGE WILL NOT BE PLACED ON THE COUNCIL AGENDA FOR THE NEXT SCHEDULED MEETING.

• OWNER TO EXPEDITE THE RECORD DRAWING AND TURNOVER PROCESS, PLEASE VERIFY THAT RECORD DRAWINGS ARE ACCURATE AT FIRST SUBMITTAL. RECORD DRAWINGS MUST BE REVERSED BY THE ENGINEERING DEPARTMENT AND UTILITY DEPARTMENTS PRIOR TO PROCESSING COMPLETION CERTIFICATIONS FOR FDEP OR DOH. MINOR CORRECTIONS TO THE SUBMITTAL PACKAGE WILL BE ALLOWED UNTIL FRIDAY OF THE SUBMITTAL WEEK TWO WEEKS PRIOR TO COUNCIL MEETING AT 4 P.M. NO FURTHER ITEMS WILL BE ACCEPTED BY THE ENGINEERING DEPARTMENT AFTER 4 P.M. ON FRIDAY. AN INCOMPLETE TURNOVER PACKAGE WILL NOT BE PLACED ON THE COUNCIL AGENDA FOR THE NEXT SCHEDULED MEETING.

• OWNER TO EXPEDITE THE RECORD DRAWING AND TURNOVER PROCESS, PLEASE VERIFY THAT RECORD DRAWINGS ARE ACCURATE AT FIRST SUBMITTAL. RECORD DRAWINGS MUST BE REVERSED BY THE ENGINEERING DEPARTMENT AND UTILITY DEPARTMENTS PRIOR TO PROCESSING COMPLETION CERTIFICATIONS FOR FDEP OR DOH. MINOR CORRECTIONS TO THE SUBMITTAL PACKAGE WILL BE ALLOWED UNTIL FRIDAY OF THE SUBMITTAL WEEK TWO WEEKS PRIOR TO COUNCIL MEETING AT 4 P.M. NO FURTHER ITEMS WILL BE ACCEPTED BY THE ENGINEERING DEPARTMENT AFTER 4 P.M. ON FRIDAY. AN INCOMPLETE TURNOVER PACKAGE WILL NOT BE PLACED ON THE COUNCIL AGENDA FOR THE NEXT SCHEDULED MEETING.

• OWNER TO EXPEDITE THE RECORD DRAWING AND TURNOVER PROCESS, PLEASE VERIFY THAT RECORD DRAWINGS ARE ACCURATE AT FIRST SUBMITTAL. RECORD DRAWINGS MUST BE REVERSED BY THE ENGINEERING DEPARTMENT AND UTILITY DEPARTMENTS PRIOR TO PROCESSING COMPLETION CERTIFICATIONS FOR FDEP OR DOH. MINOR CORRECTIONS TO THE SUBMITTAL PACKAGE WILL BE ALLOWED UNTIL FRIDAY OF THE SUBMITTAL WEEK TWO WEEKS PRIOR TO COUNCIL MEETING AT 4 P.M. NO FURTHER ITEMS WILL BE ACCEPTED BY THE ENGINEERING DEPARTMENT AFTER 4 P.M. ON FRIDAY. AN INCOMPLETE TURNOVER PACKAGE WILL NOT BE PLACED ON THE COUNCIL AGENDA FOR THE NEXT SCHEDULED MEETING.

• OWNER TO EXPEDITE THE RECORD DRAWING AND TURNOVER PROCESS, PLEASE VERIFY THAT RECORD DRAWINGS ARE ACCURATE AT FIRST SUBMITTAL. RECORD DRAWINGS MUST BE REVERSED BY THE ENGINEERING DEPARTMENT AND UTILITY DEPARTMENTS PRIOR TO PROCESSING COMPLETION CERTIFICATIONS FOR FDEP OR DOH. MINOR CORRECTIONS TO THE SUBMITTAL PACKAGE WILL BE ALLOWED UNTIL FRIDAY OF THE SUBMITTAL WEEK TWO WEEKS PRIOR TO COUNCIL MEETING AT 4 P.M. NO FURTHER ITEMS WILL BE ACCEPTED BY THE ENGINEERING DEPARTMENT AFTER 4 P.M. ON FRIDAY. AN INCOMPLETE TURNOVER PACKAGE WILL NOT BE PLACED ON THE COUNCIL AGENDA FOR THE NEXT SCHEDULED MEETING.

• OWNER TO EXPEDITE THE RECORD DRAWING AND TURNOVER PROCESS, PLEASE VERIFY THAT RECORD DRAWINGS ARE ACCURATE AT FIRST SUBMITTAL. RECORD DRAWINGS MUST BE REVERSED BY THE ENGINEERING DEPARTMENT AND UTILITY DEPARTMENTS PRIOR TO PROCESSING COMPLETION CERTIFICATIONS FOR FDEP OR DOH. MINOR CORRECTIONS TO THE SUBMITTAL PACKAGE WILL BE ALLOWED UNTIL FRIDAY OF THE SUBMITTAL WEEK TWO WEEKS PRIOR TO COUNCIL MEETING AT 4 P.M. NO FURTHER ITEMS WILL BE ACCEPTED BY THE ENGINEERING DEPARTMENT AFTER 4 P.M. ON FRIDAY. AN INCOMPLETE TURNOVER PACKAGE WILL NOT BE PLACED ON THE COUNCIL AGENDA FOR THE NEXT SCHEDULED MEETING.

• OWNER TO EXPEDITE THE RECORD DRAWING AND TURNOVER PROCESS, PLEASE VERIFY THAT RECORD DRAWINGS ARE ACCURATE AT FIRST SUBMITTAL. RECORD DRAWINGS MUST BE REVERSED BY THE ENGINEERING DEPARTMENT AND UTILITY DEPARTMENTS PRIOR TO PROCESSING COMPLETION CERTIFICATIONS FOR FDEP OR DOH. MINOR CORRECTIONS TO THE SUBMITTAL PACKAGE WILL BE ALLOWED UNTIL FRIDAY OF THE SUBMITTAL WEEK TWO WEEKS PRIOR TO COUNCIL MEETING AT 4 P.M. NO FURTHER ITEMS WILL BE ACCEPTED BY THE ENGINEERING DEPARTMENT AFTER 4 P.M. ON FRIDAY. AN INCOMPLETE TURNOVER PACKAGE WILL NOT BE PLACED ON THE COUNCIL AGENDA FOR THE NEXT SCHEDULED MEETING.

• OWNER TO EXPEDITE THE RECORD DRAWING AND TURNOVER PROCESS, PLEASE VERIFY THAT RECORD DRAWINGS ARE ACCURATE AT FIRST SUBMITTAL. RECORD DRAWINGS MUST BE REVERSED BY THE ENGINEERING DEPARTMENT AND UTILITY DEPARTMENTS PRIOR TO PROCESSING COMPLETION CERTIFICATIONS FOR FDEP OR DOH. MINOR CORRECTIONS TO THE SUBMITTAL PACKAGE WILL BE ALLOWED UNTIL FRIDAY OF THE SUBMITTAL WEEK TWO WEEKS PRIOR TO COUNCIL MEETING AT 4 P.M. NO FURTHER ITEMS WILL BE ACCEPTED BY THE ENGINEERING DEPARTMENT AFTER 4 P.M. ON FRIDAY. AN INCOMPLETE TURNOVER PACKAGE WILL NOT BE PLACED ON THE COUNCIL AGENDA FOR THE NEXT SCHEDULED MEETING.

• OWNER TO EXPEDITE THE RECORD DRAWING AND TURNOVER PROCESS, PLEASE VERIFY THAT RECORD DRAWINGS ARE ACCURATE AT FIRST SUBMITTAL. RECORD DRAWINGS MUST BE REVERSED BY THE ENGINEERING DEPARTMENT AND UTILITY DEPARTMENTS PRIOR TO PROCESSING COMPLETION CERTIFICATIONS FOR FDEP OR DOH. MINOR CORRECTIONS TO THE SUBMITTAL PACKAGE WILL BE ALLOWED UNTIL FRIDAY OF THE SUBMITTAL WEEK TWO WEEKS PRIOR TO COUNCIL MEETING AT 4 P.M. NO FURTHER ITEMS WILL BE ACCEPTED BY THE ENGINEERING DEPARTMENT AFTER 4 P.M. ON FRIDAY. AN INCOMPLETE TURNOVER PACKAGE WILL NOT BE PLACED ON THE COUNCIL AGENDA FOR THE NEXT SCHEDULED MEETING.

• OWNER TO EXPEDITE THE RECORD DRAWING AND TURNOVER PROCESS, PLEASE VERIFY THAT RECORD DRAWINGS ARE ACCURATE AT FIRST SUBMITTAL. RECORD DRAWINGS MUST BE REVERSED BY THE ENGINEERING DEPARTMENT AND UTILITY DEPARTMENTS PRIOR TO PROCESSING COMPLETION CERTIFICATIONS FOR FDEP OR DOH. MINOR CORRECTIONS TO THE SUBMITTAL PACKAGE WILL BE ALLOWED UNTIL FRIDAY OF THE SUBMITTAL WEEK TWO WEEKS PRIOR TO COUNCIL MEETING AT 4 P.M. NO FURTHER ITEMS WILL BE ACCEPTED BY THE ENGINEERING DEPARTMENT AFTER 4 P.M. ON FRIDAY. AN INCOMPLETE TURNOVER PACKAGE WILL NOT BE PLACED ON THE COUNCIL AGENDA FOR THE NEXT SCHEDULED MEETING.

• OWNER TO EXPEDITE THE RECORD DRAWING AND TURNOVER PROCESS, PLEASE VERIFY THAT RECORD DRAWINGS ARE ACCURATE AT FIRST SUBMITTAL. RECORD DRAWINGS MUST BE REVERSED BY THE ENGINEERING DEPARTMENT AND UTILITY DEPARTMENTS PRIOR TO PROCESSING COMPLETION CERTIFICATIONS FOR FDEP OR DOH. MINOR CORRECTIONS TO THE SUBMITTAL PACKAGE WILL BE ALLOWED UNTIL FRIDAY OF THE SUBMITTAL WEEK TWO WEEKS PRIOR TO COUNCIL MEETING AT 4 P.M. NO FURTHER ITEMS WILL BE ACCEPTED BY THE ENGINEERING DEPARTMENT AFTER 4 P.M. ON FRIDAY. AN INCOMPLETE TURNOVER PACKAGE WILL NOT BE PLACED ON THE COUNCIL AGENDA FOR THE NEXT SCHEDULED MEETING.

• OWNER TO EXPEDITE THE RECORD DRAWING AND TURNOVER PROCESS, PLEASE VERIFY THAT RECORD DRAWINGS ARE ACCURATE AT FIRST SUBMITTAL. RECORD DRAWINGS MUST BE REVERSED BY THE ENGINEERING DEPARTMENT AND UTILITY DEPARTMENTS PRIOR TO PROCESSING COMPLETION CERTIFICATIONS FOR FDEP OR DOH. MINOR CORRECTIONS TO THE SUBMITTAL PACKAGE WILL BE ALLOWED UNTIL FRIDAY OF THE SUBMITTAL WEEK TWO WEEKS PRIOR TO COUNCIL MEETING AT 4 P.M. NO FURTHER ITEMS WILL BE ACCEPTED BY THE ENGINEERING DEPARTMENT AFTER 4 P.M. ON FRIDAY. AN INCOMPLETE TURNOVER PACKAGE WILL NOT BE PLACED ON THE COUNCIL AGENDA FOR THE NEXT SCHEDULED MEETING.

• OWNER TO EXPEDITE THE RECORD DRAWING AND TURNOVER PROCESS, PLEASE VERIFY THAT RECORD DRAWINGS ARE ACCURATE AT FIRST SUBMITTAL. RECORD DRAWINGS MUST BE REVERSED BY THE ENGINEERING DEPARTMENT AND UTILITY DEPARTMENTS PRIOR TO PROCESSING COMPLETION CERTIFICATIONS FOR FDEP OR DOH. MINOR CORRECTIONS TO THE SUBMITTAL PACKAGE WILL BE ALLOWED UNTIL FRIDAY OF THE SUBMITTAL WEEK TWO WEEKS PRIOR TO COUNCIL MEETING AT 4 P.M. NO FURTHER ITEMS WILL BE ACCEPTED BY THE ENGINEERING DEPARTMENT AFTER 4 P.M. ON FRIDAY. AN INCOMPLETE TURNOVER PACKAGE WILL NOT BE PLACED ON THE COUNCIL AGENDA FOR THE NEXT SCHEDULED MEETING.

• OWNER TO EXPEDITE THE RECORD DRAWING AND TURNOVER PROCESS, PLEASE VERIFY THAT RECORD DRAWINGS ARE ACCURATE AT FIRST SUBMITTAL. RECORD DRAWINGS MUST BE REVERSED BY THE ENGINEERING DEPARTMENT AND UTILITY DEPARTMENTS PRIOR TO PROCESSING COMPLETION CERTIFICATIONS FOR FDEP OR DOH. MINOR CORRECTIONS TO THE SUBMITTAL PACKAGE WILL BE ALLOWED UNTIL FRIDAY OF THE SUBMITTAL WEEK TWO WEEKS PRIOR TO COUNCIL MEETING AT 4 P.M. NO FURTHER ITEMS WILL BE ACCEPTED BY THE ENGINEERING DEPARTMENT AFTER 4 P.M. ON FRIDAY. AN INCOMPLETE TURNOVER PACKAGE WILL NOT BE PLACED ON THE COUNCIL AGENDA FOR THE NEXT SCHEDULED MEETING.

• OWNER TO EXPEDITE THE RECORD DRAWING AND TURNOVER PROCESS, PLEASE VERIFY THAT RECORD DRAWINGS ARE ACCURATE AT FIRST SUBMITTAL. RECORD DRAWINGS MUST BE REVERSED BY THE ENGINEERING DEPARTMENT AND UTILITY DEPARTMENTS PRIOR TO PROCESSING COMPLETION CERTIFICATIONS FOR FDEP OR DOH. MINOR CORRECTIONS TO THE SUBMITTAL PACKAGE WILL BE ALLOWED UNTIL FRIDAY OF THE SUBMITTAL WEEK TWO WEEKS PRIOR TO COUNCIL MEETING AT 4 P.M. NO FURTHER ITEMS WILL BE ACCEPTED BY THE ENGINEERING DEPARTMENT AFTER 4 P.M. ON FRIDAY. AN INCOMPLETE TURNOVER PACKAGE WILL NOT BE PLACED ON THE COUNCIL AGENDA FOR THE NEXT SCHEDULED MEETING.

• OWNER TO EXPEDITE THE RECORD DRAWING AND TURNOVER PROCESS, PLEASE VERIFY THAT RECORD DRAWINGS ARE ACCURATE AT FIRST SUBMITTAL. RECORD DRAWINGS MUST BE REVERSED BY THE ENGINEERING DEPARTMENT AND UTILITY DEPARTMENTS PRIOR TO PROCESSING COMPLETION CERTIFICATIONS FOR FDEP OR DOH. MINOR CORRECTIONS TO THE SUBMITTAL PACKAGE WILL BE ALLOWED UNTIL FRIDAY OF THE SUBMITTAL WEEK TWO WEEKS PRIOR TO COUNCIL MEETING AT 4 P.M. NO FURTHER ITEMS WILL BE ACCEPTED BY THE ENGINEERING DEPARTMENT AFTER 4 P.M. ON FRIDAY. AN INCOMPLETE TURNOVER PACKAGE WILL NOT BE PLACED ON THE COUNCIL AGENDA FOR THE NEXT SCHEDULED MEETING.

• OWNER TO EXPEDITE THE RECORD DRAWING AND TURNOVER PROCESS, PLEASE VERIFY THAT RECORD DRAWINGS ARE ACCURATE AT FIRST SUBMITTAL. RECORD DRAWINGS MUST BE REVERSED BY THE ENGINEERING DEPARTMENT AND UTILITY DEPARTMENTS PRIOR TO PROCESSING COMPLETION CERTIFICATIONS FOR FDEP OR DOH. MINOR CORRECTIONS TO THE SUBMITTAL PACKAGE WILL BE ALLOWED UNTIL FRIDAY OF THE SUBMITTAL WEEK TWO WEEKS PRIOR TO COUNCIL MEETING AT 4 P.M. NO FURTHER ITEMS WILL BE ACCEPTED BY THE ENGINEERING DEPARTMENT AFTER 4 P.M. ON FRIDAY. AN INCOMPLETE TURNOVER PACKAGE WILL NOT BE PLACED ON THE COUNCIL AGENDA FOR THE NEXT SCHEDULED MEETING.

• OWNER TO EXPEDITE THE RECORD DRAWING AND TURNOVER PROCESS, PLEASE VERIFY THAT RECORD DRAWINGS ARE ACCURATE AT FIRST SUBMITTAL. RECORD DRAWINGS MUST BE REVERSED BY THE ENGINEERING DEPARTMENT AND UTILITY DEPARTMENTS PRIOR TO PROCESSING COMPLETION CERTIFICATIONS FOR FDEP OR DOH. MINOR CORRECTIONS TO THE SUBMITTAL PACKAGE WILL BE ALLOWED UNTIL FRIDAY OF THE SUBMITTAL WEEK TWO WEEKS PRIOR TO COUNCIL MEETING AT 4 P.M. NO FURTHER ITEMS WILL BE ACCEPTED BY THE ENGINEERING DEPARTMENT AFTER 4 P.M. ON FRIDAY. AN INCOMPLETE TURNOVER PACKAGE WILL NOT BE PLACED ON THE COUNCIL AGENDA FOR THE NEXT SCHEDULED MEETING.

• OWNER TO EXPEDITE THE RECORD DRAWING AND TURNOVER PROCESS, PLEASE VERIFY THAT RECORD DRAWINGS ARE ACCURATE AT FIRST SUBMITTAL. RECORD DRAWINGS MUST BE REVERSED BY THE ENGINEERING DEPARTMENT AND UTILITY DEPARTMENTS PRIOR TO PROCESSING COMPLETION CERTIFICATIONS FOR FDEP OR DOH. MINOR CORRECTIONS TO THE SUBMITTAL PACKAGE WILL BE ALLOWED UNTIL FRIDAY OF THE SUBMITTAL WEEK TWO WEEKS PRIOR TO COUNCIL MEETING AT 4 P.M. NO FURTHER ITEMS WILL BE ACCEPTED BY THE ENGINEERING DEPARTMENT AFTER 4 P.M. ON FRIDAY. AN INCOMPLETE TURNOVER PACKAGE WILL NOT BE PLACED ON THE COUNCIL AGENDA FOR THE NEXT SCHEDULED MEETING.

• OWNER TO EXPEDITE THE RECORD DRAWING AND TURNOVER PROCESS, PLEASE VERIFY THAT RECORD DRAWINGS ARE ACCURATE AT FIRST SUBMITTAL. RECORD DRAWINGS MUST BE REVERSED BY THE ENGINEERING DEPARTMENT AND UTILITY DEPARTMENTS PRIOR TO PROCESSING COMPLETION CERTIFICATIONS FOR FDEP OR DOH. MINOR CORRECTIONS TO THE SUBMITTAL PACKAGE WILL BE ALLOWED UNTIL FRIDAY OF THE SUBMITTAL WEEK TWO WEEKS PRIOR TO COUNCIL MEETING AT 4 P.M. NO FURTHER ITEMS WILL BE ACCEPTED BY THE ENGINEERING DEPARTMENT AFTER 4 P.M. ON FRIDAY. AN INCOMPLETE TURNOVER PACKAGE WILL NOT BE PLACED ON THE COUNCIL AGENDA FOR THE NEXT SCHEDULED MEETING.

• OWNER TO EXPEDITE THE RECORD DRAWING AND TURNOVER PROCESS, PLEASE VERIFY THAT RECORD DRAWINGS ARE ACCURATE AT FIRST SUBMITTAL. RECORD DRAWINGS MUST BE REVERSED BY THE ENGINEERING DEPARTMENT AND UTILITY DEPARTMENTS PRIOR TO PROCESSING COMPLETION CERTIFICATIONS FOR FDEP OR DOH. MINOR CORRECTIONS TO THE SUBMITTAL PACKAGE WILL BE ALLOWED UNTIL FRIDAY OF THE SUBMITTAL WEEK TWO WEEKS PRIOR TO COUNCIL MEETING AT 4 P.M. NO FURTHER ITEMS WILL BE ACCEPTED BY THE ENGINEERING DEPARTMENT AFTER 4 P.M. ON FRIDAY. AN INCOMPLETE TURNOVER PACKAGE WILL NOT BE PLACED ON THE COUNCIL AGENDA FOR THE NEXT SCHEDULED MEETING.

• OWNER TO EXPEDITE THE RECORD DRAWING AND TURNOVER PROCESS, PLEASE VERIFY THAT RECORD DRAWINGS ARE ACCURATE AT FIRST SUBMITTAL. RECORD DRAWINGS MUST BE REVERSED BY THE ENGINEERING DEPARTMENT AND UTILITY DEPARTMENTS PRIOR TO PROCESSING COMPLETION CERTIFICATIONS FOR FDEP OR DOH. MINOR CORRECTIONS TO THE SUBMITTAL PACKAGE WILL BE ALLOWED UNTIL FRIDAY OF THE SUBMITTAL WEEK TWO WEEKS PRIOR TO COUNCIL MEETING AT 4 P.M. NO FURTHER ITEMS WILL BE ACCEPTED BY THE ENGINEERING DEPARTMENT AFTER 4 P.M. ON FRIDAY. AN INCOMPLETE TURNOVER PACKAGE WILL NOT BE PLACED ON THE COUNCIL AGENDA FOR THE NEXT SCHEDULED MEETING.

• OWNER TO EXPEDITE THE RECORD DRAWING AND TURNOVER PROCESS, PLEASE VERIFY THAT RECORD DRAWINGS ARE ACCURATE AT FIRST SUBMITTAL. RECORD DRAWINGS MUST BE REVERSED BY THE ENGINEERING DEPARTMENT AND UTILITY DEPARTMENTS PRIOR TO PROCESSING COMPLETION CERTIFICATIONS FOR FDEP OR DOH. MINOR CORRECTIONS TO THE SUBMITTAL PACKAGE WILL BE ALLOWED UNTIL FRIDAY OF THE SUBMITTAL WEEK TWO WEEKS PRIOR TO COUNCIL MEETING AT 4 P.M. NO FURTHER ITEMS WILL BE ACCEPTED BY THE ENGINEERING DEPARTMENT AFTER 4 P.M. ON FRIDAY. AN INCOMPLETE TURNOVER PACKAGE WILL NOT BE PLACED ON THE COUNCIL AGENDA FOR THE NEXT SCHEDULED MEETING.

• OWNER TO EXPEDITE THE RECORD DRAWING AND TURNOVER PROCESS, PLEASE VERIFY THAT RECORD DRAWINGS ARE ACCURATE AT FIRST SUBMITTAL. RECORD DRAWINGS MUST BE REVERSED BY THE ENGINEERING DEPARTMENT AND UTILITY DEPARTMENTS PRIOR TO PROCESSING COMPLETION CERTIFICATIONS FOR FDEP OR DOH. MINOR CORRECTIONS TO THE SUBMITTAL PACKAGE WILL BE ALLOWED UNTIL FRIDAY OF THE SUBMITTAL WEEK TWO WEEKS PRIOR TO COUNCIL MEETING AT 4 P.M. NO FURTHER ITEMS WILL BE ACCEPTED BY THE ENGINEERING DEPARTMENT AFTER 4 P.M. ON FRIDAY. AN INCOMPLETE TURNOVER PACKAGE WILL NOT BE PLACED ON THE COUNCIL AGENDA FOR THE NEXT SCHEDULED MEETING.

• OWNER TO EXPEDITE THE RECORD DRAWING AND TURNOVER PROCESS, PLEASE VERIFY THAT RECORD DRAWINGS ARE ACCURATE AT FIRST SUBMITTAL. RECORD DRAWINGS MUST BE REVERSED BY THE ENGINEERING DEPARTMENT AND UTILITY DEPARTMENTS PRIOR TO PROCESSING COMPLETION CERTIFICATIONS FOR FDEP OR DOH. MINOR CORRECTIONS TO THE SUBMITTAL PACKAGE WILL BE ALLOWED UNTIL FRIDAY OF THE SUBMITTAL WEEK TWO WEEKS PRIOR TO COUNCIL MEETING AT 4 P.M. NO FURTHER ITEMS WILL BE ACCEPTED BY THE ENGINEERING DEPARTMENT AFTER 4 P.M. ON FRIDAY. AN INCOMPLETE TURNOVER PACKAGE WILL NOT BE PLACED ON THE COUNCIL AGENDA FOR THE NEXT SCHEDULED MEETING.

• OWNER TO EXPEDITE THE RECORD DRAWING AND TURNOVER PROCESS, PLEASE VERIFY THAT RECORD DRAWINGS ARE ACCURATE AT FIRST SUBMITTAL. RECORD DRAWINGS MUST BE REVERSED BY THE ENGINEERING DEPARTMENT AND UTILITY DEPARTMENTS PRIOR TO PROCESSING COMPLETION CERTIFICATIONS FOR FDEP OR DOH. MINOR CORRECTIONS TO THE SUBMITTAL PACKAGE WILL BE ALLOWED UNTIL FRIDAY OF THE SUBMITTAL WEEK TWO WEEKS PRIOR TO COUNCIL MEETING AT 4 P.M. NO FURTHER ITEMS WILL BE ACCEPTED BY THE ENGINEERING DEPARTMENT AFTER 4 P.M. ON FRIDAY. AN INCOMPLETE TURNOVER PACKAGE WILL NOT BE PLACED ON THE COUNCIL AGENDA FOR THE NEXT SCHEDULED MEETING.

• OWNER TO EXPEDITE THE RECORD DRAWING AND TURNOVER PROCESS, PLEASE VERIFY THAT RECORD DRAWINGS ARE ACCURATE AT FIRST SUBMITTAL. RECORD DRAWINGS MUST BE REVERSED BY THE ENGINEERING DEPARTMENT AND UTILITY DEPARTMENTS PRIOR TO PROCESSING COMPLETION CERTIFICATIONS FOR FDEP OR DOH. MINOR CORRECTIONS TO THE SUBMITTAL PACKAGE WILL BE ALLOWED UNTIL FRIDAY OF THE SUBMITTAL WEEK TWO WEEKS PRIOR TO COUNCIL MEETING AT 4 P.M. NO FURTHER ITEMS WILL BE ACCEPTED BY THE ENGINEERING DEPARTMENT AFTER 4 P.M. ON FRIDAY. AN INCOMPLETE TURNOVER PACKAGE WILL NOT BE PLACED ON THE COUNCIL AGENDA FOR THE NEXT SCHEDULED MEETING.

• OWNER TO EXPEDITE THE RECORD DRAWING AND TURNOVER PROCESS, PLEASE VERIFY THAT RECORD DRAWINGS ARE ACCURATE AT FIRST SUBMITTAL. RECORD DRAWINGS MUST BE REVERSED BY THE ENGINEERING DEPARTMENT AND UTILITY DEPARTMENTS PRIOR TO PROCESSING COMPLETION CERTIFICATIONS FOR FDEP OR DOH. MINOR CORRECTIONS TO THE SUBMITTAL PACKAGE WILL BE ALLOWED UNTIL FRIDAY OF THE SUBMITTAL WEEK TWO WEEKS PRIOR TO COUNCIL MEETING AT 4 P.M. NO FURTHER ITEMS WILL BE ACCEPTED BY THE ENGINEERING DEPARTMENT AFTER 4 P.M. ON FRIDAY. AN INCOMPLETE TURNOVER PACKAGE WILL NOT BE PLACED ON THE COUNCIL AGENDA FOR THE NEXT SCHEDULED MEETING.

• OWNER TO EXPEDITE THE RECORD DRAWING AND TURNOVER PROCESS, PLEASE VERIFY THAT RECORD DRAWINGS ARE ACCURATE AT FIRST SUBMITTAL. RECORD DRAWINGS MUST BE REVERSED BY THE ENGINEERING DEPARTMENT AND UTILITY DEPARTMENTS PRIOR TO PROCESSING COMPLETION CERTIFICATIONS FOR FDEP OR DOH. MINOR CORRECTIONS TO THE SUBMITTAL PACKAGE WILL BE ALLOWED UNTIL FRIDAY OF THE SUBMITTAL WEEK TWO WEEKS PRIOR TO COUNCIL MEETING AT 4 P.M. NO FURTHER ITEMS WILL BE ACCEPTED BY THE ENGINEERING DEPARTMENT AFTER 4 P.M. ON FRIDAY. AN INCOMPLETE TURNOVER PACKAGE WILL NOT BE PLACED ON THE COUNCIL AGENDA FOR THE NEXT SCHEDULED MEETING.

• OWNER TO EXPEDITE THE RECORD DRAWING AND TURNOVER PROCESS, PLEASE VERIFY THAT RECORD DRAWINGS ARE ACCURATE AT FIRST SUBMITTAL. RECORD DRAWINGS MUST BE REVERSED BY THE ENGINEERING DEPARTMENT AND UTILITY DEPARTMENTS PRIOR TO PROCESSING COMPLETION CERTIFICATIONS FOR FDEP OR DOH. MINOR CORRECTIONS TO THE SUBMITTAL PACKAGE WILL BE ALLOWED UNTIL FRIDAY OF THE SUBMITTAL WEEK TWO WEEKS PRIOR TO COUNCIL MEETING AT 4 P.M. NO FURTHER ITEMS WILL BE ACCEPTED BY THE ENGINEERING DEPARTMENT AFTER 4 P.M. ON FRIDAY. AN INCOMPLETE TURNOVER PACKAGE WILL NOT BE PLACED ON THE COUNCIL AGENDA FOR THE NEXT SCHEDULED MEETING.

• OWNER TO EXPEDITE THE RECORD DRAWING AND TURNOVER PROCESS, PLEASE VERIFY THAT RECORD DRAWINGS ARE ACCURATE AT FIRST SUBMITTAL. RECORD DRAWINGS MUST BE REVERSED BY THE ENGINEERING DEPARTMENT AND UTILITY DEPARTMENTS PRIOR TO PROCESSING COMPLETION CERTIFICATIONS FOR FDEP OR DOH. MINOR CORRECTIONS TO THE SUBMITTAL PACKAGE WILL BE ALLOWED UNTIL FRIDAY OF THE SUBMITTAL WEEK TWO WEEKS PRIOR TO COUNCIL MEETING AT 4 P.M. NO FURTHER ITEMS WILL BE ACCEPTED BY THE ENGINEERING DEPARTMENT AFTER 4 P.M. ON FRIDAY. AN INCOMPLETE TURNOVER PACKAGE WILL NOT BE PLACED ON THE COUNCIL AGENDA FOR THE NEXT SCHEDULED MEETING.

• OWNER TO EXPEDITE THE RECORD DRAWING AND TURNOVER PROCESS, PLEASE VERIFY THAT RECORD DRAWINGS ARE ACCURATE AT FIRST SUBMITTAL. RECORD DRAWINGS MUST BE REVERSED BY THE ENGINEERING DEPARTMENT AND UTILITY DEPARTMENTS PRIOR TO PROCESSING COMPLETION CERTIFICATIONS FOR FDEP OR DOH. MINOR CORRECTIONS TO THE SUBMITTAL PACKAGE WILL BE ALLOWED UNTIL FRIDAY OF THE SUBMITTAL WEEK TWO WEEKS PRIOR TO COUNCIL MEETING AT 4 P.M. NO FURTHER ITEMS WILL BE ACCEPTED BY THE ENGINEERING DEPARTMENT AFTER 4 P.M. ON FRIDAY. AN INCOMPLETE TURNOVER PACKAGE WILL NOT BE PLACED ON THE COUNCIL AGENDA FOR THE NEXT SCHEDULED MEETING.

• OWNER TO EXPEDITE THE RECORD DRAWING AND TURNOVER PROCESS, PLEASE VERIFY THAT RECORD DRAWINGS ARE ACCURATE AT FIRST SUBMITTAL. RECORD DRAWINGS MUST BE REVERSED BY THE ENGINEERING DEPARTMENT AND UTILITY DEPARTMENTS PRIOR TO PROCESSING COMPLETION CERTIFICATIONS FOR FDEP OR DOH. MINOR CORRECTIONS TO THE SUBMITTAL PACKAGE WILL BE ALLOWED UNTIL FRIDAY OF THE SUBMITTAL WEEK TWO WEEKS PRIOR TO COUNCIL MEETING AT 4 P.M. NO FURTHER ITEMS WILL BE ACCEPTED BY THE ENGINEERING DEPARTMENT AFTER 4 P.M. ON FRIDAY. AN INCOMPLETE TURNOVER PACKAGE WILL NOT BE PLACED ON THE COUNCIL AGENDA FOR THE NEXT SCHEDULED MEETING.

• OWNER TO EXPEDITE THE RECORD DRAWING AND TURNOVER PROCESS, PLEASE VERIFY THAT RECORD DRAWINGS ARE ACCURATE AT FIRST SUBMITTAL. RECORD DRAWINGS MUST BE REVERSED BY THE ENGINEERING DEPARTMENT AND UTILITY DEPARTMENTS PRIOR TO PROCESSING COMPLETION CERTIFICATIONS FOR FDEP OR DOH. MINOR CORRECTIONS TO THE SUBMITTAL PACKAGE WILL BE ALLOWED UNTIL FRIDAY OF THE SUBMITTAL WEEK TWO WEEKS PRIOR TO COUNCIL MEETING AT 4 P.M. NO FURTHER ITEMS WILL BE ACCEPTED BY THE ENGINEERING DEPARTMENT AFTER 4 P.M. ON FRIDAY. AN INCOMPLETE TURNOVER PACKAGE WILL NOT BE PLACED ON THE COUNCIL AGENDA FOR THE NEXT SCHEDULED MEETING.

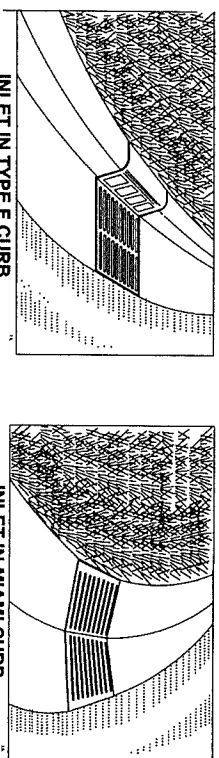
• OWNER TO EXPEDITE THE RECORD DRAWING AND TURNOVER PROCESS, PLEASE VERIFY THAT RECORD DRAWINGS ARE ACCURATE AT FIRST SUBMITTAL. RECORD DRAWINGS MUST BE REVERSED BY THE ENGINEERING DEPARTMENT AND UTILITY DEPARTMENTS PRIOR TO PROCESSING COMPLETION CERTIFICATIONS FOR FDEP OR DOH. MINOR CORRECTIONS TO THE SUBMITTAL PACKAGE WILL BE ALLOWED UNTIL FRIDAY OF THE SUBMITTAL WEEK TWO WEEKS PRIOR TO COUNCIL MEETING AT 4 P.M. NO FURTHER ITEMS WILL BE ACCEPTED BY THE ENGINEERING DEPARTMENT AFTER 4 P.M. ON FRIDAY. AN INCOMPLETE TURNOVER PACKAGE WILL NOT BE PLACED ON THE COUNCIL AGENDA FOR THE NEXT SCHEDULED MEETING.

• OWNER TO EXPEDITE THE RECORD DRAWING AND TURNOVER PROCESS, PLEASE VERIFY THAT RECORD DRAWINGS ARE ACCURATE AT FIRST SUBMITTAL. RECORD DRAWINGS MUST BE REVERSED BY THE ENGINEERING DEPARTMENT AND UTILITY DEPARTMENTS PRIOR TO PROCESSING COMPLETION CERTIFICATIONS FOR FDEP OR DOH. MINOR CORRECTIONS TO THE SUBMITTAL PACKAGE WILL BE ALLOWED UNTIL FRIDAY OF THE SUBMITTAL WEEK TWO WEEKS PRIOR TO COUNCIL MEETING AT 4 P.M. NO FURTHER ITEMS WILL BE ACCEPTED BY THE ENGINEERING DEPARTMENT AFTER 4 P.M. ON FRIDAY. AN INCOMPLETE TURNOVER PACKAGE WILL NOT BE PLACED ON THE COUNCIL AGENDA FOR THE NEXT SCHEDULED MEETING.

• OWNER TO EXPEDITE THE RECORD DRAWING AND TURNOVER PROCESS, PLEASE VERIFY THAT RECORD DRAWINGS ARE ACCURATE AT FIRST SUBMITTAL. RECORD DRAWINGS MUST BE REVERSED BY THE ENGINEERING DEPARTMENT AND UTILITY DEPARTMENTS PRIOR TO PROCESSING COMPLETION CERTIFICATIONS FOR FDEP OR DOH. MINOR CORRECTIONS TO THE SUBMITTAL PACKAGE WILL BE ALLOWED UNTIL FRIDAY OF THE SUBMITTAL WEEK TWO WEEKS PRIOR TO COUNCIL MEETING AT 4 P.M. NO FURTHER ITEMS WILL BE ACCEPTED BY THE ENGINEERING DEPARTMENT AFTER 4 P.M. ON FRIDAY. AN INCOMPLETE TURNOVER PACKAGE WILL NOT BE PLACED ON THE COUNCIL AGENDA FOR THE NEXT SCHEDULED MEETING.

• OWNER TO EXPEDITE THE RECORD DRAWING AND TURNOVER PROCESS, PLEASE VERIFY THAT RECORD DRAWINGS ARE ACCURATE AT FIRST SUBMITTAL. RECORD DRAWINGS MUST BE REVERSED BY THE ENGINEERING DEPARTMENT AND UTILITY DEPARTMENTS PRIOR TO PROCESSING COMPLETION CERTIFICATIONS FOR FDEP OR DOH. MINOR CORRECTIONS TO THE SUBMITTAL PACKAGE WILL BE ALLOWED UNTIL FRIDAY OF THE SUBMITTAL WEEK TWO WEEKS PRIOR TO COUNCIL MEETING AT 4 P.M. NO FURTHER ITEMS WILL BE ACCEPTED BY THE ENGINEERING DEPARTMENT AFTER 4 P.M. ON FRIDAY. AN INCOMPLETE TURNOVER PACKAGE WILL NOT BE PLACED ON THE COUNCIL AGENDA FOR THE NEXT SCHEDULED MEETING.

• OWNER TO EXP



TYPE F CURB

- 1) ALL STREETS SHALL HAVE A TWO-FOOT WIDE CONCRETE (3000 PSI AT 28 DAYS WITH FIBER REINFORCEMENT) CURB AND GUTTER, AND MEET OR EXCEED FOOT SPECIFICATIONS UNLESS OTHERWISE APPROVED BY THE CITY ENGINEER.
- 2) ALTERNATE CURB DESIGNS THAT MEET OR EXCEED FOOT SPECIFICATIONS MAY BE USED UPON APPROVAL BY THE CITY ENGINEER.

MIAMI CURB

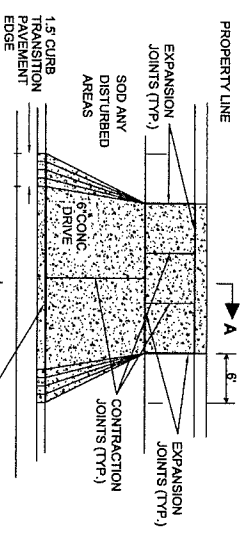
1 CURB DETAILS

A) PUBLIC AND PRIVATE ROADWAYS
 B) COMMERCIAL AND INDUSTRIAL DEVELOPMENTS INCLUDING ACCESSWAYS, PARKING LOTS, ETC.
 C) RESIDENTIAL SUBDIVISIONS AND COMMERCIAL DEVELOPMENTS INCLUDING ACCESSWAYS, PARKING LOTS, ETC. (NON-MANUFACTURING WITH LESS THAN 10% TRUCK TRAFFIC)

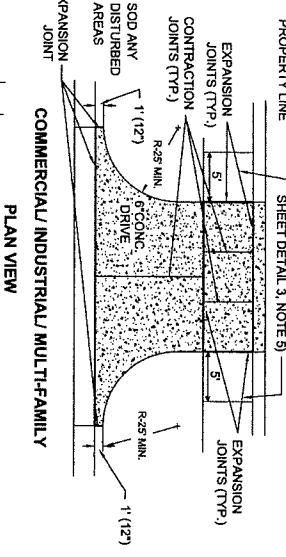
	A	B	C
SUBGRADE - TYPE B STABILIZED LBR 40 MIN.	12"	12"	12"
ABC3 - ASPHALT BASE	5"	5"	4"
CTB	10"	10"	8"
CCA	10"	10"	8"
ASPHALTIC CONCRETE	S-1	S-1	S-1/S-3

ALTERNATE PAVEMENT FOR PARKING LOTS ONLY:
 SUBGRADE - 12" TYPE B STABILIZED LBR 40 MIN.
 PAVEMENT - 6" CONCRETE 3000PSI @28 DAYS WITH MAX. 4" SLUMP & FIBER REINFORCEMENT.

4 PAVEMENT STANDARDS

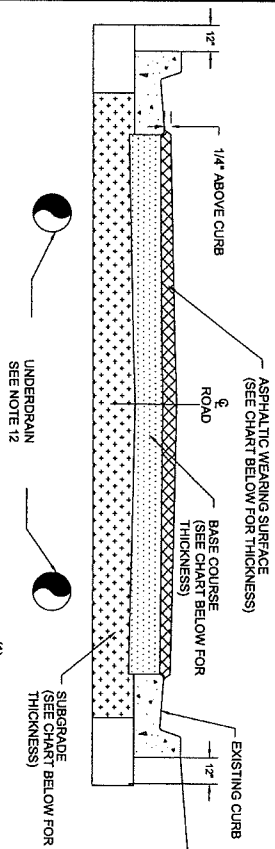


6" CONCRETE RESIDENTIAL DRIVEWAY



5 DRIVEWAY AND SIDEWALK DETAILS

- NOTES:
- 1) SIDEWALKS SHALL BE CONSTRUCTED OF 3000 PSI AT 28 DAYS CONCRETE (MAXIMUM 4" SLUMP) WITH FIBER REINFORCEMENT.
 - 2) ALL SIDEWALKS SHALL BE 6" WIDE AND CONSTRUCTED WITH A SLOPE OF 1/4-INCH PER FOOT TOWARD CURB AND GUTTER.
 - 3) CONTRACTION SAW-CUTS SHALL BE CONSTRUCTED EVERY 5' LENGTH OF SIDEWALK. EXPANSION JOINTS SHALL BE CONSTRUCTED AT 90' INTERVALS.
 - 4) 1/2-INCH THICK ASPHALTIC FELT OR "PRESSURE TREATED WOOD" SHALL BE PLACED AT EACH EXPANSION JOINT.
 - 5) EXISTING CURBS AND GUTTERS SHALL BE REMOVED ONLY AT EXISTING JOINTS.
 - 6) DRIVEWAY WIDTH AND LOCATION SHALL COMPLY WITH ZONING CODES, SECTIONS 122-446, 62-84, 62-85.
 - 7) ALL MATERIALS & METHODS OF CONSTRUCTION SHALL BE IN ACCORDANCE WITH LATEST EDITION OF THE FOOT, STANDARDS FOR ROAD & BRIDGE CONSTRUCTION. IN ADDITION, CONCRETE SHALL BE 3000 PSI AT 28 DAYS WITH A MAXIMUM 4" SLUMP AND FIBER REINFORCEMENT.
 - 8) DRIVEWAY SLOPES SHALL BE IN ACCORDANCE WITH THE LATEST EDITION OF THE FOOT, STANDARDS FOR ROADWAY AND TRAFFIC DESIGN STANDARDS, INDEX 515.

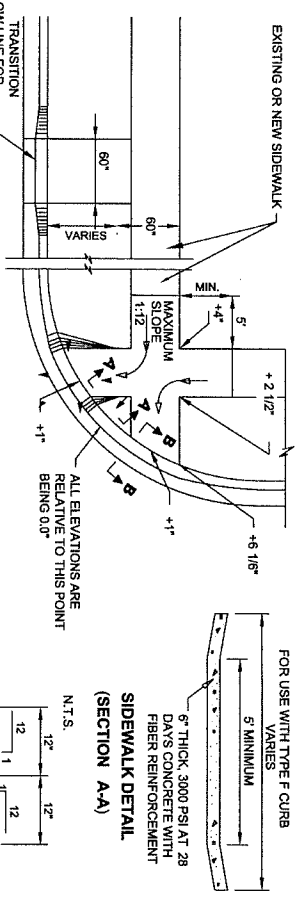


STREET CLASSIFICATION	PAVEMENT DESIGN (1) (MINIMUM THICKNESS)	ABC-3 BASE (2)	SUB-GRADE (3)
LOCAL STREET	1 1/2" OF TYPE S-3S-1	5"	12" MIN. 40 LBR
COLLECTOR STREET	1 1/2" OF TYPE S-1	5"	12" MIN. 40 LBR
ARTERIAL STREET	1 1/2" OF TYPE S-1	5"	12" MIN. 40 LBR

2 TYPICAL ROADWAY SECTION

- NOTES:
- 1) CEMENT TREATED BASE (CTB) OR CRUSHED CONCRETE AGGREGATE (CCA) WITH EQUIVALENT STRUCTURAL THICKNESSES WILL BE CONSIDERED. SHELL IS UNACCEPTABLE. CTB MATERIAL MUST YIELD COMPRESSIVE STRENGTH WITHIN THE RANGE OF 175 TO 275 PSI. CCA MUST HAVE AN LBR VALUE OF 2-100.
 - 2) IF ABC-3 BASE IS USED, THE CITY ENGINEERING DEPARTMENT MAY REQUIRE A HIGHER LBR SUBGRADE.
 - 3) ROAD DESIGN PROPOSALS SHALL BE SUBMITTED AT LEAST 20 DAYS PRIOR TO CONSTRUCTION.
 - 4) ALL GRANULAR COURSES OR LIFTS OF ROAD CONSTRUCTION MUST BE COMPACTED TO 98% OF ITS OPTIMUM DENSITY AS PER T-180 (ASHTO). CTB SHALL BE COMPACTED TO 98% OF ITS LBR FORMULATION DENSITY (ASHTO T-99).
 - 5) ALL MINERAL MATERIALS USED IN CONSTRUCTION OF ROADWAYS MUST MEET THE FOLLOWING CRITERIA:
 - a) FINES (PASSING # 200 SIEVE) MUST BE LIMITED TO 5.12%.
 - b) MOISTURE LIMITED TO 5.5%.
 - c) UNDESIRABLE MATERIALS.
 - d) CEMENT TREATED BASE.
 - 6) THE MATERIAL TO BE USED AS THE FILLER AGGREGATE IN CTB MUST BE LBR TESTED PRIOR TO DESIGN FORMULATION (ADDING CEMENT). THIS MATERIAL MUST ACHIEVE AN LBR VALUE OF 2-100.
 - 7) ALL MATERIALS & METHODS OF CONSTRUCTION WITH THE EXCEPTION OF ASPHALT PAVING AND BASE MATERIAL SHALL BE IN ACCORDANCE WITH LATEST EDITION OF THE FOOT, STANDARDS FOR ROAD & BRIDGE CONSTRUCTION AND TRAFFIC DESIGN STANDARDS. ASPHALT PAVING AND BRIDGE CONSTRUCTION OR LATEST CITY OF VENICE STANDARD DETAIL, WHOEVER IS MORE RESTRICTIVE. IN ADDITION, ALL CONCRETE SHALL BE 3000 PSI AT 28 DAYS WITH A MAXIMUM 4" SLUMP AND FIBER REINFORCEMENT.
 - 8) SIGNAGE AND PAVEMENT MARKINGS TO BE IN ACCORDANCE WITH LATEST EDITION OF THE FOOT, ROADWAY AND TRAFFIC DESIGN STANDARDS.
 - 9) ALL CITY STREET SIGNS WILL BE BLUE BACKGROUND WITH 6" WHITE LETTERS AND CONSTRUCTED WITH HIGH INTENSITY REFLECTORIZED MATERIAL. LOCAL ROAD SIGNS SHALL BE 9 INCHES WIDE. ALL STREET SIGNS DESIGNS TO BE APPROVED BY THE DIRECTOR OF PUBLIC WORKS PRIOR TO INSTALLATION.
 - 10) ALL STREETS WITHIN CITY LIMITS SHALL MEET THE MINIMUM DESIGN STANDARDS ESTABLISHED IN CITY STANDARD DETAILS. THESE PADS WILL EXTEND TO AT LEAST 12" BEYOND THE CURB.
 - 11) UNDERDRAINS AND SIDEWALKS, THE USE AND PLACEMENT OF THE PAVEMENT GRADE AND ARE LIKELY TO AFFECT THE STRUCTURAL INTEGRITY OF THE ROAD. IF DESIRED, THEIR USE AND PLACEMENT WILL BE INCLUDED BY THE RESPONSIBLE ENGINEER OF RECORD AS PART OF THE ROAD DESIGN.

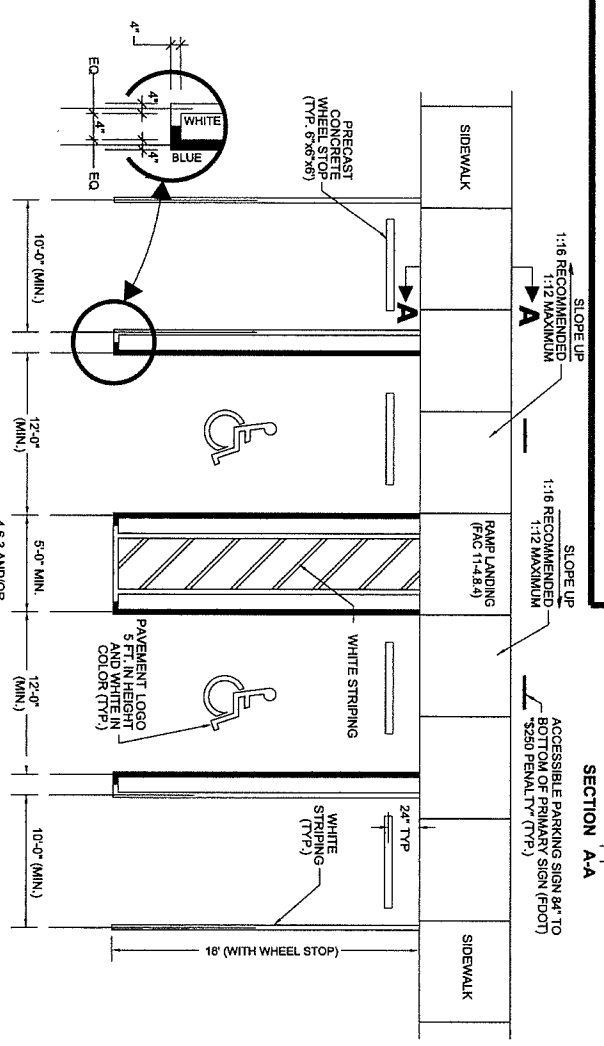
3 TYPICAL HANDICAPPED RAMP



CURB DETAIL (SECTION B-B)

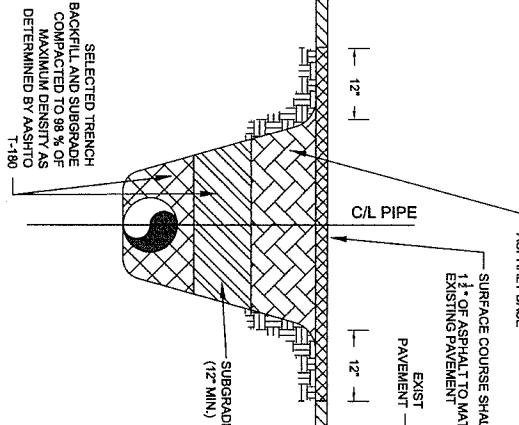
- NOTES:
- 1) ALL CONCRETE RAMPS SHALL BE 4" THICK, INCREASING TO 6" THICK AT THE CURB FROM A DISTANCE OF 48"
 - 2) ALL CONNECTIONS TO AN EXISTING SIDEWALK SHALL BE AT AN EXPANSION OR CONTRACTION JOINT
 - 3) WHERE PEDESTRIAN MOVEMENT CROSSES RAMP, THE MAXIMUM SLOPE SHALL BE 1:12
 - 4) ALL RAMPS AND WALKS WITHIN THREE FEET OF A FREQUENTLY USED DRIVE (GREATER THAN DUPLEX) SHALL HAVE A TACTILE SURFACE. RAMPS ARE DEFINED AS WALKS WITH A SLOPE GREATER THAN 1:12 AND/OR ADJACENT TO CURBS.
 - 5) TACTILE SURFACE SHALL BE CAST-IN-PLACE COMPOSITE TACTILE (BRICK RED) (ADA SOLUTIONS OR APPROVED EQUALS), OR CAST-IN-PLACE ULTRA-MAX PADS (BRICK RED) (ULTRA TECH OR APPROVED EQUALS).
 - 6) ALL MATERIALS & METHODS OF CONSTRUCTION SHALL BE IN ACCORDANCE WITH LATEST EDITION OF THE FOOT, STANDARDS FOR ROAD & BRIDGE CONSTRUCTION. IN ADDITION, CONCRETE SHALL BE 3000 PSI AT 28 DAYS WITH A MAXIMUM 4" SLUMP AND FIBER REINFORCEMENT.

6 ACCESSIBLE AND TYPICAL PARKING SPACE



- NOTES:
- 1) IF AN ADJACENT SIDEWALK IS A MINIMUM OF SEVEN (7) FEET IN WIDTH AND PROVIDES A 5" INCH CURB, THE SIDEWALK MAY SERVE AS THE WHEEL STOP AND THE STANDARD PARKING SPACE MAY BE 16' DEEP.
 - 2) IF AN ADJACENT LANDSCAPE AREA IS A MINIMUM OF 3.5' PER ABUTTING PARKING SPACE AND PROTECTED BY CONCRETE CURBING OR WHEEL STOP, 2 FEET OF THE REQUIRED DEPTH MAY ENCRUSH INTO THE LANDSCAPE AREA. IF THE REQUIRED DEPTH ENCRUSHES INTO THE LANDSCAPE AREA, THE WHEEL STOP MUST BE PLACED AT THE EDGE OF PAVEMENT.
 - 3) ACCESSIBLE PARKING SPACES AND ACCESS AISLES SHALL BE CONSTRUCTED WITH SURFACE SLOPES NOT TO EXCEED 1:50 (2%) IN ALL DIRECTIONS (FAC 11-4.6.3)
 - 4) NO COLORS OTHER THAN WHITE AND BLUE SHALL BE USED FOR PARKING SPACE PAVEMENT MARKINGS.

7 PAVEMENT RESTORATION FOR UTILITY TRENCHES



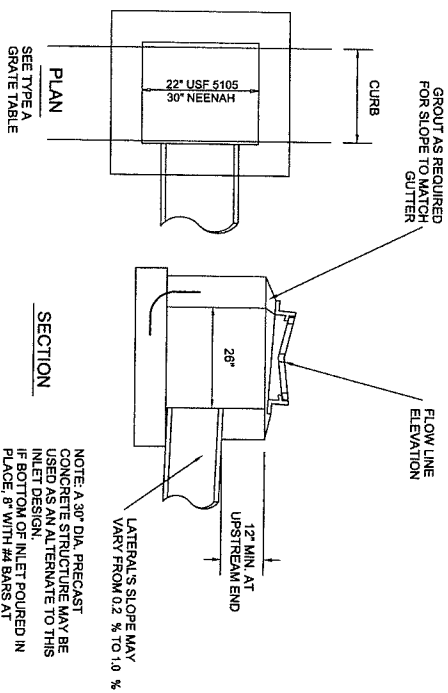
- NOTES:
- 1) ALTERNATIVE BASE COURSE MATERIALS WITH EQUIVALENT STRUCTURAL THICKNESSES WILL BE CONSIDERED. HOWEVER, SHELL IS UNACCEPTABLE. CEMENT TREATED BASE MATERIAL MUST YIELD COMPRESSIVE STRENGTH WITHIN THE RANGE OF 175 TO 275 PSI. CRUSH CONCRETE AGGREGATE MUST HAVE AN LBR 2-150.
 - 2) REQUIREMENTS FOR INSTALLATION OF PIPELINES IS SHOWN IN DETAIL T, SHEET 5-OF THESE STANDARDS.
 - 3) FLOWABLE FILL CONCRETE MAY BE USED IN LIEU OF BACKFILL AND PAVEMENT SUBCOURSE WITH APPROVAL BY THE CITY ENGINEER. DESIGN AND ACCEPTANCE OF FLOWABLE FILL WILL BE GOVERNED BY APPLICABLE FOOT STANDARDS.

No.	Date	Revision	BY	DATE:
1	7/20/2007	PS-1 REVISED HDCP, PARKING SPACE	MG	JAN. 15, 2012
2	1/15/2008	2008 UPDATE	MG	DRAWN BY:
3	1/15/2009	2009 UPDATE	MG	M.T.
4	1/15/2010	2010 UPDATE	MG	CHECKED BY:
5	1/15/2011	2011 UPDATE	MG	K.W.
6	1/15/2012	2012 UPDATE	MT	SCALE: AS SHOWN

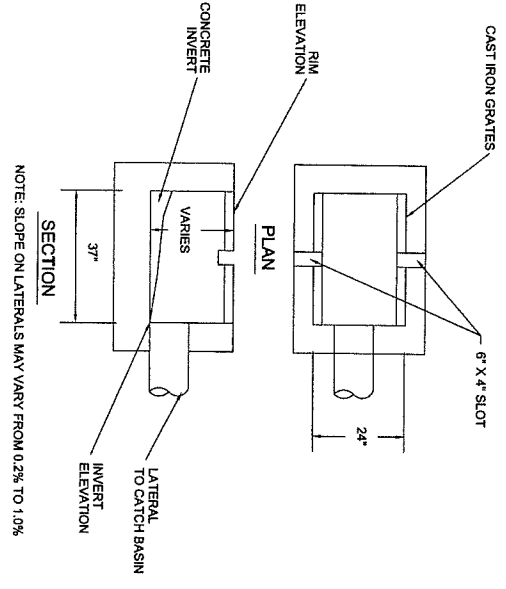
CITY OF VENICE
 ENGINEERING DEPARTMENT
 401 WEST VENICE AVE.
 VENICE FL 34285
 (941) 486-2626
 FAX (941) 480-3031

FILE NO. 1030 124
 SHEET 3 OF 13
 PS-1

2012 STANDARD DETAILS
PAVING AND
SIDEWALK DETAILS

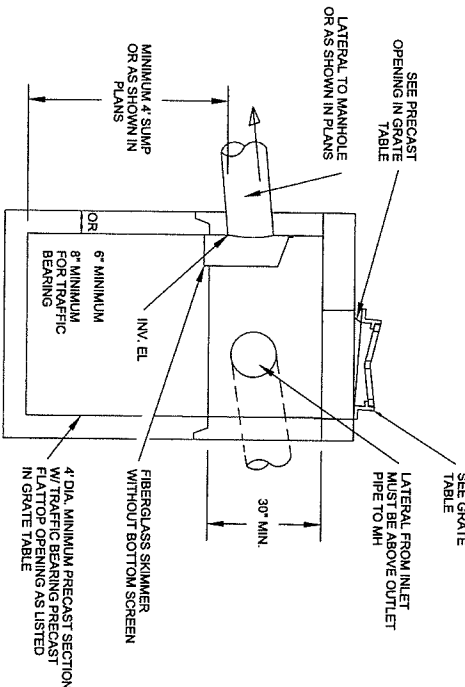


1 TYPE A TOP GRATE INLET

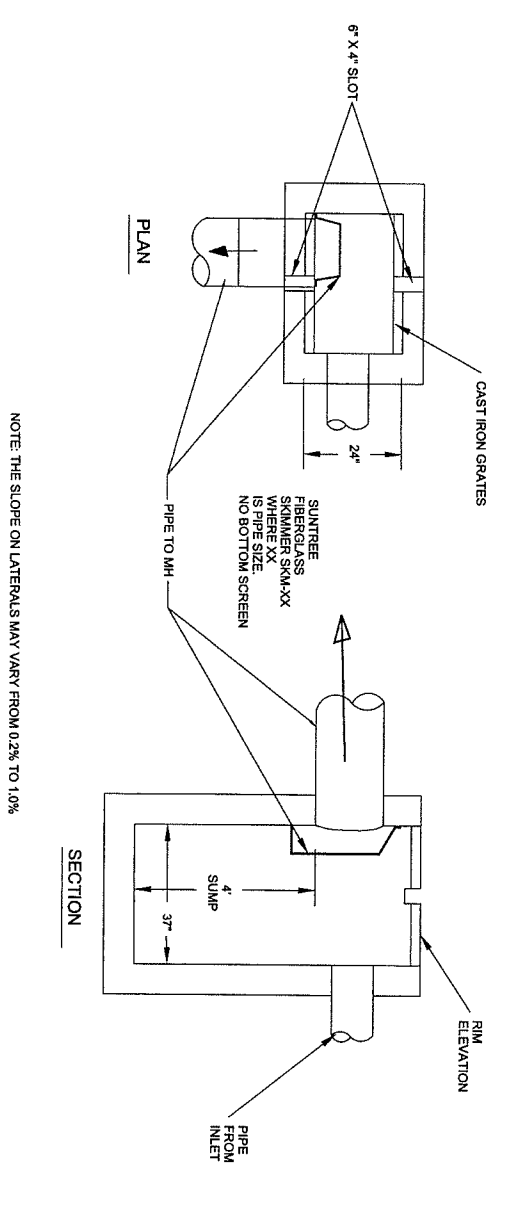


2 TYPE C INLET
(FDOT INDEX 232)

- 3 ALL STORMWATER STRUCTURES**
- 1) WITHIN THE CITY RIGHT OF WAY, ALL STORMWATER DRAINAGE PIPING AND STRUCTURES IN AND PROXIMATE TO TRAFFIC AREAS WILL BE FOOTCOTV DETAIL COMPLIANT.
 - 2) OUTSIDE OF CITY RIGHT OF WAY AREAS, ALL CITY JURISDICTIONAL STORMWATER BE FLORIDA DEPARTMENT OF TRANSPORTATION AND RELATED APPROPRIATE AGENCIES WILL BE FLORIDA DEPARTMENT OF TRANSPORTATION AND COMPLIANT.
 - 3) SHOP DRAWINGS, DRAINAGE PIPES, STRUCTURES, PIECES AND APPURTENANCES SHALL BE REVIEWED AND APPROVED BY THE ENGINEER OF RECORD AND CITY ENGINEER BEFORE CONSTRUCTION. THIS PROCEDURE IS ACCOMPLISHED BY THE SHOP DRAWING REVIEW PROCESS.
 - 4) RECORD DRAWINGS, NEWLY CONSTRUCTED PUBLIC STORMWATER DRAINAGE WILL BE DOCUMENTED IN THE FORM OF RECORD DRAWINGS AND SUBMITTED TO THE CITY ENGINEER FOR INCLUSION INTO THE GIS DATABASE. AS A MINIMUM, THE DRAWINGS AT THE INLET SIZE AND TYPE OF PIPING, THE INVERT, AND TOP OF PIPE ELEVATIONS AT ALL INLETS, GRATE OR TOP OF STRUCTURES TO EXISTING CONVEYANCES, STRUCTURE INVERTS, GRATE OR TOP OF STRUCTURES SHALL BE PLACED TO THE RECORD DRAWING. THIS RECORD DRAWING REQUIREMENT IS IN ADDITION TO THE CONSTRUCTION AS PERMITTED BY SWPMM (SWPMM FORM 547.27/50C (06/00)).
 - 5) OTHER:
 - A. NO LIFTING HOLES OR OTHER SIMILAR PENETRATIONS OF STORMWATER PIPING
 - B. ALL PIPING JOINTS SHALL BE WEATHERED WITH A WEATHER FILTER FABRIC OR EQUAL.
 - C. ALL CONCRETE PIPE JOINTS WILL BE GASKETED ACCORDING TO THE MANUFACTURER AND FOOT AND ASTM STANDARDS TO PROVIDE A LEAK PROOF CONNECTION.
 - D. OTHER PRE-CAST STRUCTURES SHALL MEET ASTM C-478 STANDARDS.
 - E. INLET GRATINGS IN AREAS ACCESSIBLE TO BICYCLE OR TO PEDESTRIAN USE MUST BE RETICULINE OR OF SIMILAR MANUFACTURE.
 - F. INLET GRATINGS IN CORROSIVE AREAS SHALL BE GALVANIZED, DITCH BOTTOM INLET GRATINGS IS ONE SUCH EXAMPLE.
 - G. INLETS FOR STORMWATER SHOULD BE DESIGNED TO REFLECT DEBRIS, TRASH, AND OTHER POLLUTANTS FROM ENTERING INTO PUBLIC STORMWATER CONVEYANCES, DISCHARGERS, OR OTHER DEVICES TO REDUCE THE DISCHARGE OF FOREIGN MATERIALS.



4 TYPE A CATCH BASIN

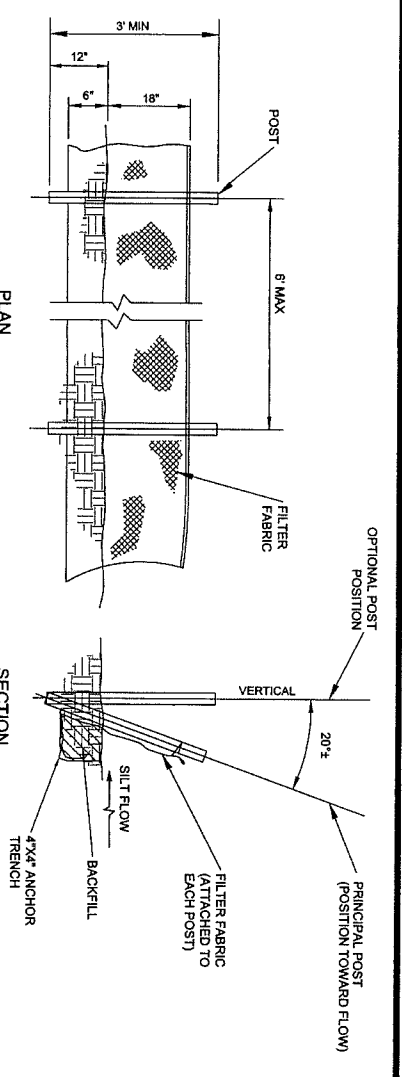


5 TYPE C CATCH BASIN

GRATE	USED AT	PRECAST OPENG DIA.
USF 5105	PARKWAY & MIAMI CURB	26"
NEEMAH R-3502A	TYPE F CURB & GUTTER	30"

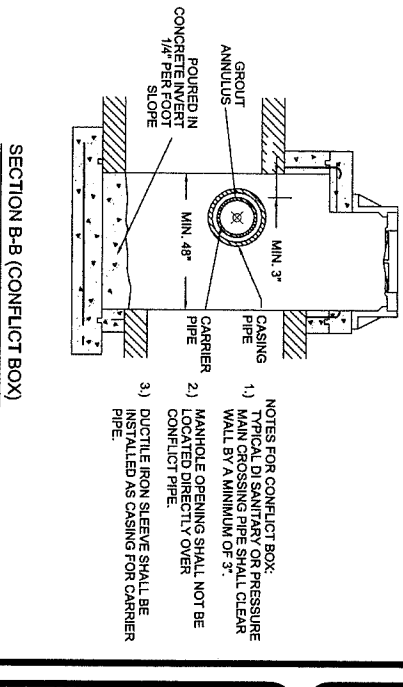
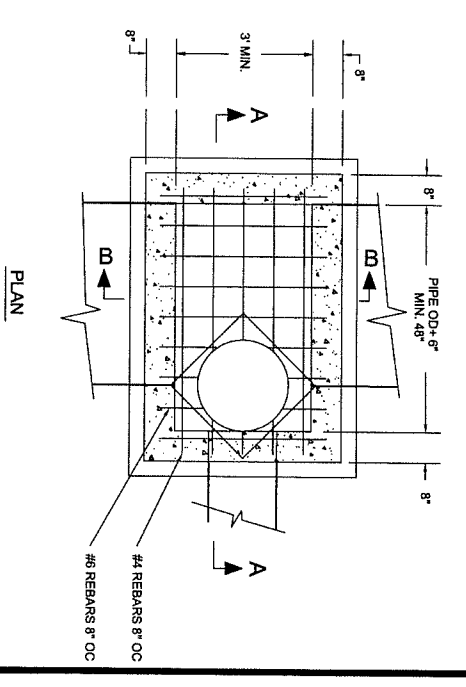
- 1) ADJUST THE FRAME TO THE SAME PROFILE AS THE CURB.
- 2) THE WALLS ARE TO BE:
 - A. PRECAST AS PER THE NOTES.
 - B. POURED IN PLACE 3000 PSI AT 28 DAYS CONCRETE 3000 PSI WITH FIBER REINFORCEMENT WALLS 8" THICK WITH #4 BAR AT THE CORNER.
 - C. CONCRETE BLOCK 8" THICK WITH #4 BARS AT THE CORNERS.
- 3) ALL CASINGS SHALL BE PAINTED BLACK, ONLY ONE-PIECE CAST OR DUCTILE IRON MANHOLE ADJUSTING RING SHALL BE USED.

6 TYPE A GRATE TABLE



7 SILT FENCE
(FDOT INDEX No. 102)

STEEL, 1.33 LBS/FT (MIN.) POST OPTIONS:
WOOD 2"x4" OR 2" 1/2" DIA.



- NOTES FOR CONFLICT BOX:
- 1) TYPICAL DI SANITARY OR PRESSURE MAIN CROSSING PIPE SHALL CLEAR MAIN MANHOLE OPENING BY A MINIMUM OF 3".
 - 2) MANHOLE OPENING SHALL NOT BE INSTALLED AS CASING FOR CARRIER PIPE.
 - 3) DUCTILE IRON SLEEVE SHALL BE INSTALLED AS CASING FOR CARRIER PIPE.

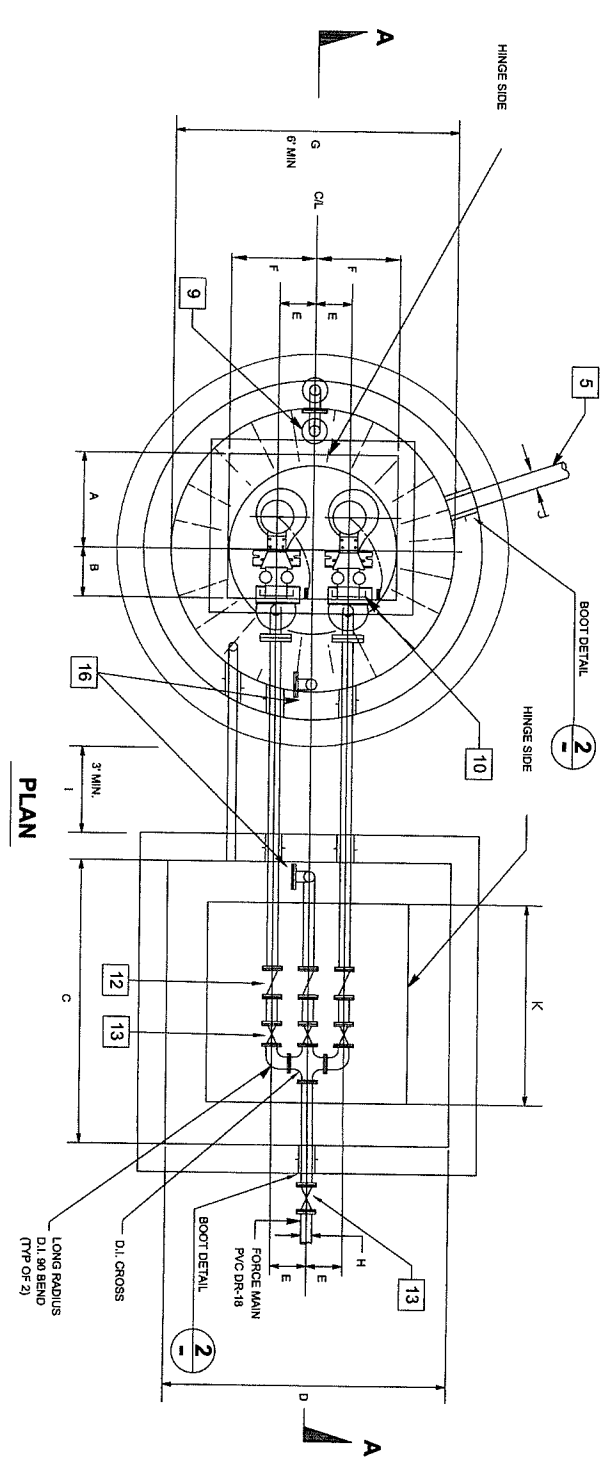
8 STORM SEWER MANHOLE DETAILS

No.	Date	Revision	BY	DATE:
1	1/1/2007	2007 UPDATE	JW	JAN. 15, 2012
2	1/15/2008	2008 UPDATE	MG	DRAWN BY:
3	1/15/2009	2009 UPDATE	MG	M.T.
4	1/15/2010	2010 UPDATE	MG	CHECKED BY:
5	1/15/2011	2011 UPDATE	MG	K.W.
6	1/15/2012	2012 UPDATE	MT	SCALE: AS SHOWN

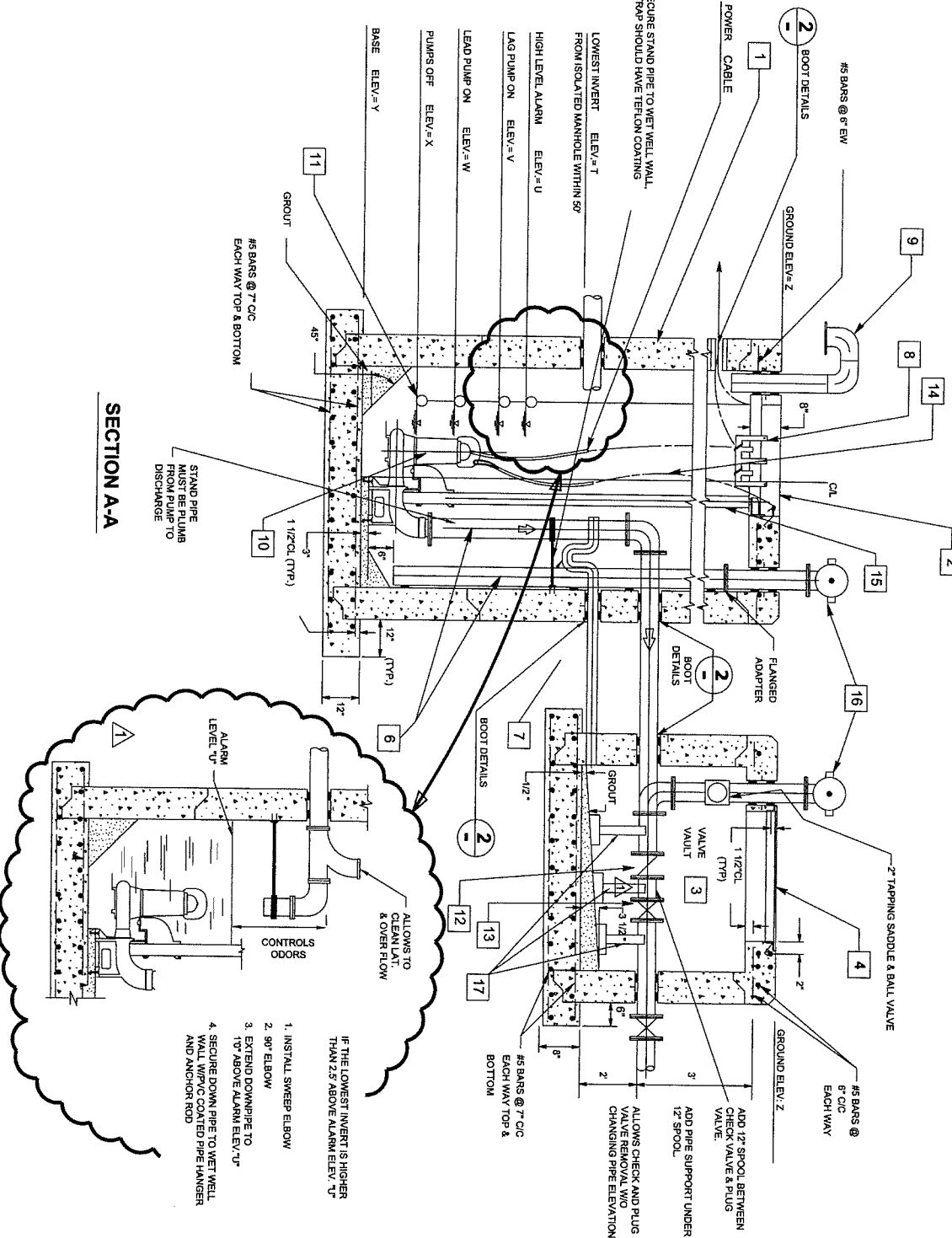
**2012 STANDARD DETAILS
DRAINAGE AND
STORMWATER DETAILS**

CITY OF VENICE
ENGINEERING DEPARTMENT
401 WEST VENICE AVE.
VENICE FL 34285
(941) 486-2626
FAX (941) 480-3031



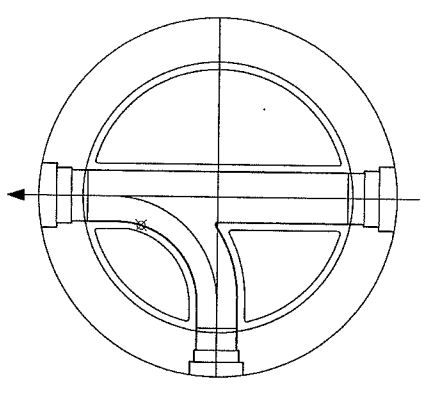


PLAN

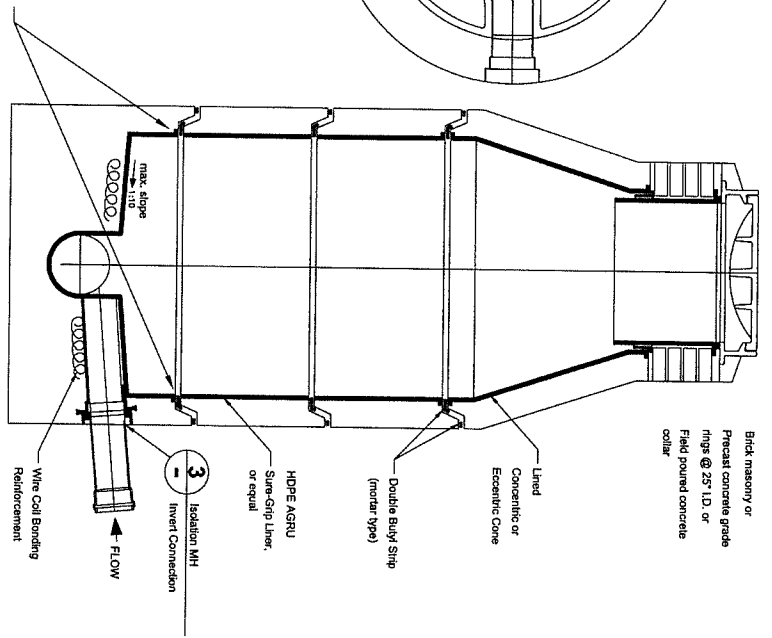


SECTION A-A

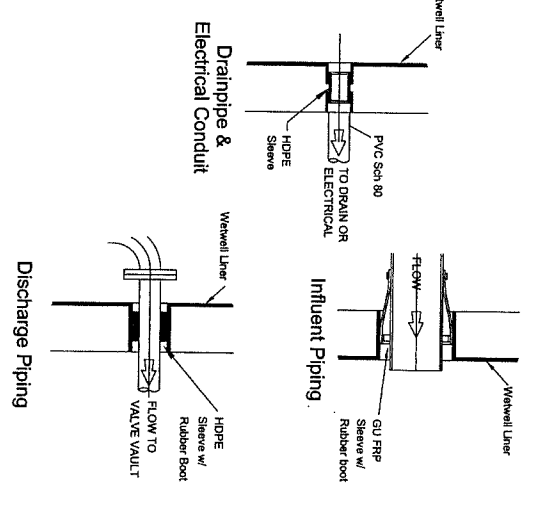
1. INSTALL SWEEP ELBOW
 2. 90° ELBOW
 3. EXTEND DOWNPIPE TO 10' ABOVE ALARM ELEV. 'U'
 4. SECURE DOWN PIPE TO WET WELL WALL WITH PVC COATED PIPE HANGER AND ANCHOR ROD
- IF THE LOWEST INVERT IS HIGHER THAN 2.5' ABOVE ALARM ELEV. 'U'



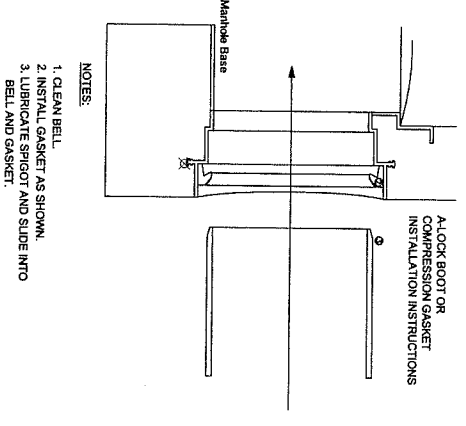
- NOTES:
1. BENCHES SHALL BE FIBERGLASS REINFORCED PLASTIC.
 2. BASE SHALL BE EXTENDED SIGHT TO FIRST JOINT, AS MANUFACTURED BY GU.
 3. NO FIELD MODIFICATIONS TO THE MANHOLE SHALL BE ACCEPTED.
 4. INFLOW DISH SHALL BE PROVIDED.



COMPLETELY LINED ISOLATION MANHOLE



BOOT DETAILS



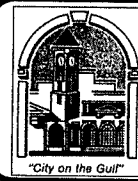
- NOTES:
1. CLEAN BELL.
 2. INSTALL GASKET AS SHOWN.
 3. LUBRICATE SPIGOT AND SLIDE INTO BELL AND GASKET.

ISOLATION MH INVERT CONNECTIONS

No.	Date	Revision	BY	DATE:
1	1/1/2007	2007 UPDATE	JR	JAN. 15, 2012
2	1/1/2008	2008 UPDATE	JW	DRAWN BY:
3	1/15/2009	2009 UPDATE	MG	M.T.
4	1/15/2010	2010 UPDATE	MG	CHECKED BY:
5	1/15/2011	2011 UPDATE	MG	K.W.
6	1/15/2012	1/15/2012	MT	SCALE: AS SHOWN

2012 STANDARD DETAILS
LIFT STATION DETAILS
PLAN AND SECTION

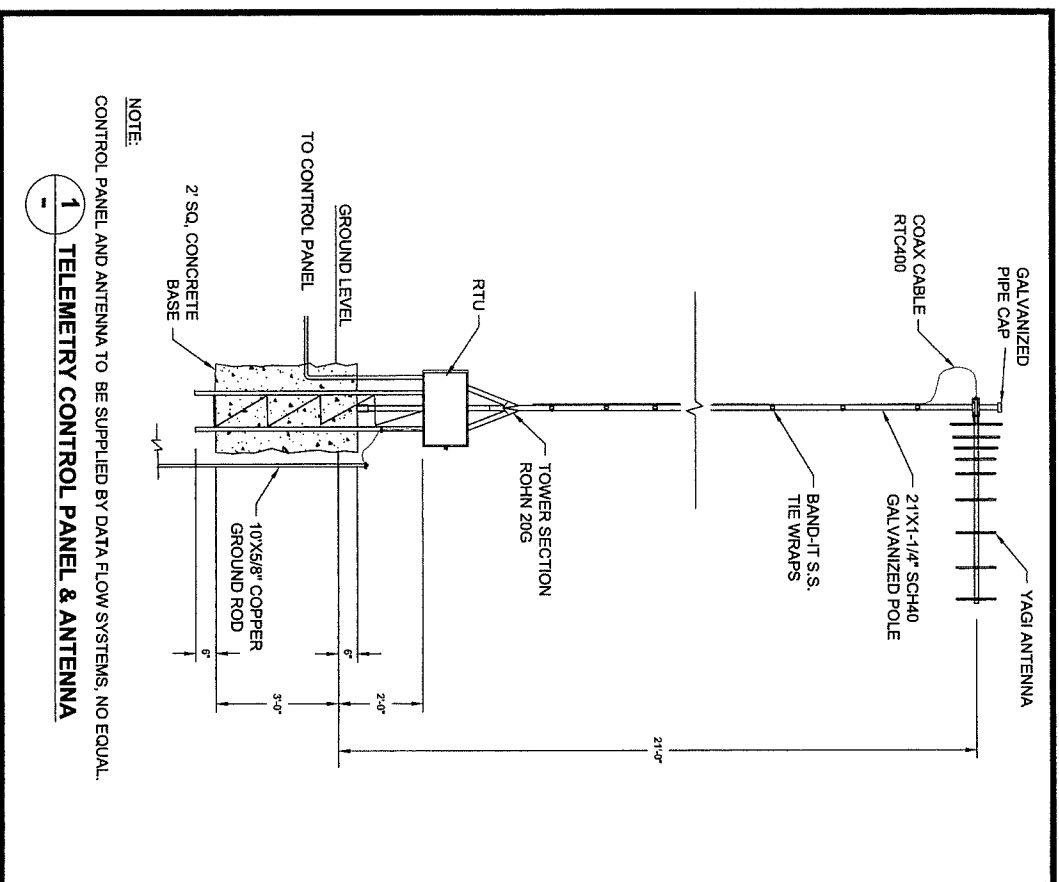
CITY OF VENICE
ENGINEERING DEPARTMENT
401 WEST VENICE AVE.
VENICE FL 34285
(941) 486-2626
FAX (941) 480-3031



FILE NO. 1030130
SHEET 9 OF 13
LS-1

Item	Quantity	Description
1	1	WETWELL: Shall be reinforced pre-cast concrete as specified by ASTM C-478, latest revision. Minimum 6-ft. interior diameter. Joints shall be sealed with Butyl seal conforming to federal specification SS-S-00210. Interior shall be lined with HDPE Agru Sure-Grip and welded by an Agru certified welder, or equal. Exterior shall be coated with coal-tar based sealant as manufactured by Concrete Sealants, New Carlisle, Ohio or equal, including the bottom of the slab. All exterior joints shall be wrapped with rubberneck tape. Wetwell shall be set on a minimum base of 6 inches of gravel. A minimum of three 2-inch PVC conduits shall be provided for electrical connections to the motor control panel. All hardware supplied shall be 316 SS.
2	1	WETWELL ACCESS HATCH COVER: 2 door access as manufactured by Halliday Products or equal. Access frame and covers shall be fabricated of 1/4 inch aluminum diamond-pattern plate, withstand a minimum live load of 150 psf, and provide support for 316 SS guide rails and 316 SS cable holder for electrical wiring. Covers shall provide lifting handle and safety latch to hold cover in open position. Locking hasps shall be furnished for each cover.
3	1	VALVE VAULT: Shall be pre-cast concrete. All piping shall have 12 inch clearance to floor and walls. Interior and exterior shall be coated with two coats of Koppers Intersol 49 or equal. Install 2 inch 316 SS saddle clamp & ball valve on vertical riser by-pass piping inside of valve vault. All piping entering or exiting the valve vault shall have a rubber boot.
4	1	VALVE VAULT COVER: Shall have a 2-door access as manufactured by Halliday Products or equal. Access frame and covers shall be fabricated of 1/4 inch aluminum diamond-pattern plate and withstand a minimum live load of 150 psf. Each cover shall provide a lifting handle and safety latch to hold cover in open position. Locking hasps shall be furnished for each cover. All hardware supplied shall be 316 SS.
5	1	ISOLATION MANHOLE AND INFLUENT PIPING: Isolation manhole shall be located within fifty (50) feet of the wetwell and discharge through a solitary gravity pipe directly into the wetwell. The isolation manhole walls shall be lined with Agru Sure-Grip, while the manhole invert and bottom shall be lined with a GURFRP liner or equal. All Interior Seams/Joints to be welded by an Agru certified welder. Isolation manhole shall be located outside of traffic area.
6	1	PIPING: All piping within the wetwell (discharge, standpipe, and vent) shall be solvent-weld Schedule 80 PVC with a minimum diameter of four inches, except for the ductile iron spool heading outside the wetwell to the cam-lock. All piping and fittings in the valve vault shall be flanged ductile iron and coated with 2 coats coal-tar epoxy.
7	1	VALVE VAULT DRAIN: 2-inch PVC drain with trap. Locate trap to inside of wet well.
8	1	FLOAT CABLE RACK: 316 Stainless Steel
9	1	VENT PIPE: 4-inch Solvent-weld Schedule 80 PVC pipe with stainless steel screen.
10	2	PUMPS: Shall be 240v 3-phase power, submersible-type Hydraulic, no equal. Pumps shall be a minimum of 100gpm. No vortex or grinder pumps are allowed. A pump curve shall be attached to this set of plans including points of operation or design conditions. Each pump power cable shall have a separate conduit exiting the wetwell and a single additional 2-inch conduit shall be provided for the float control cables (1 spare pump, same as specs. 1 spare impeller & wear ring for each pump). Impellers shall be 316 stainless steel.
11	4	FLOAT LEVEL SWITCHES: Manufacturer - Another Scientific Inc. normally open types control duty float switch Single Throw - Double Pole(STDP) 10 amp @ 120 Vac narrow angle mercury switch Model - 2902 - B4-S2-C3 w/stainless steel band (Spare set of floats). Do not install on wall with invert.
12	3	CHECK VALVES: Shall be iron body, bronze-mounted, stainless steel hinge pin, outside lever and weight-operated, swing non-slam type, and equipped with removable inspection covers. Units shall be rated for 150 psi minimum working pressure and shall permit full flow area equal to that of the connecting pipe. Use only valves manufactured by Mueller. All check valves shall have a petcock tapped into the top of the bonnet providing a 1/4-inch NST, female fitting for attachment of a pressure gauge.
13	4	PLUG VALVES: Bodies shall be cast iron per ASTM A 126, Class B. Ends shall be flanged, Class 125 per ANSI B16.1. Plugs shall be cast iron (ASTM A 126, Class B), or ductile iron (ASTM A 536, Grade 65-45-12) with neoprene facing. Valve body seats shall be 316 stainless steel or have a raised welded-in overlay at least 1/8-inch thick or not less than 90% nickel. Body capscrews and bolts and nuts shall be 1 type 316 stainless steel. Packing shall be butadiene-filled Teflon and replaceable with valve body under full pressure. Valves shall be Dezunk. Plug valves, 4 inches through 12 inches, shall be non-lubricated type. Minimum pressure rating shall be 175 psi.
14	2	LIFT CABLE: 316 Stainless Steel installed on each pump.
15	1	GUIDE RAILS: 2-inch diameter rails, 316 Stainless Steel, shall be installed plumb from top to bottom, max. 12" from top of lid.
16	1	CAM-LOCK: Ductile iron spool piping with quick disconnect, dust cover, and chain. Position towards by-pass pump access.
17	AS NEEDED	PIPE SUPPORT: Adjustable cast iron pipe support stands in valve vault, minimum seven (7) and shall be coated with 2 coats of coal-tar epoxy. All above ground by-pass piping to be lined epoxy coated ductile iron.

- Additional Notes:**
- 1) If force main discharges into a manifolded system, coordinate with the City of Venice Utilities Department to have one pump operating at each manifolded lift station during time of pump testing.
 - 2) If the force main is connected to an existing manhole, the following procedures will be taken:
 - a. The City of Venice Utilities Department shall determine the extent of modifications needed to the receiving manhole, to accommodate the force main and additional flow.
 - b. At the City's discretion, the manhole shall be refurbished using IET System 3 Resin, or be completely replaced with a new manhole meeting the specifications of the isolation manhole. (Completely lined)
 - c. For either replacement or refurbishment, shop drawings and specifications must be submitted for approval.
 - d. The contractor shall make arrangements for by-passing this manhole with the City of Venice Utilities Department
 - 3) Check capacity of pumps by reading motor amp draw and voltage with discharge pressure and rate of flow at three points on the pump curve. Rate of flow and head must be within respectively 10 percent and 5 percent above approved curve for acceptance.
 - 4) Float controls shall be submitted to check automatic operation.
 - 5) All control panel elements shall be operated during pump testing.
 - 6) The pump and control panel manufacturer's representatives shall be present for the initial start-up and testing and shall submit a written report of acceptance to the City of Venice Utilities Department upon successful test results.
 - 7) Shop drawings of entire lift station installation must be approved by the City of Venice Engineering and Utility Departments prior to placement of order.



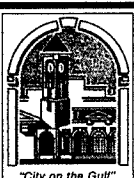
NOTE:
CONTROL PANEL AND ANTENNA TO BE SUPPLIED BY DATA FLOW SYSTEMS. NO EQUAL.

1 TELEMETRY CONTROL PANEL & ANTENNA

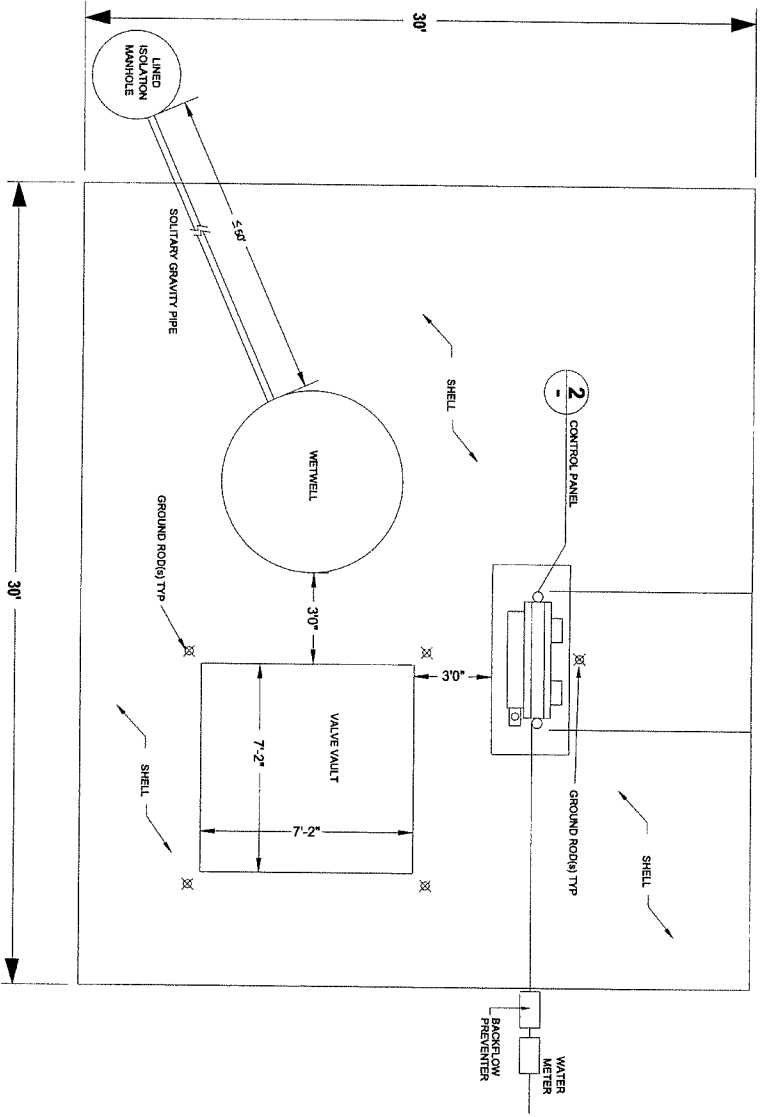
No.	Date	Revision	BY	DATE:
1	1/1/2007	2007 UPDATE	JR	JAN. 15, 2012
2	1/1/2008	2008 UPDATE	JW	DRAWN BY:
3	1/15/2009	2009 UPDATE	MG	M.T.
4	1/15/2010	2010 UPDATE	MG	CHECKED BY:
5	1/15/2011	2011 UPDATE	MG	K.W.
6	1/15/2012	2012 UPDATE	MT	SCALE: AS SHOWN

**2012 STANDARD DETAILS
LIFT STATION DETAILS
LIFT STATION SCHEDULE**

CITY OF VENICE
ENGINEERING DEPARTMENT
401 WEST VENICE AVE.
VENICE FL 34285
(941) 486-2626
FAX (941) 480-3031

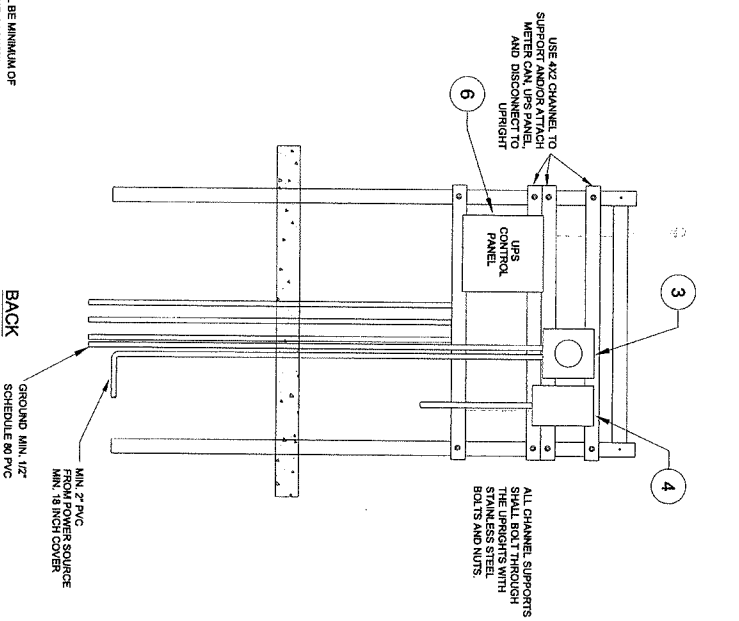
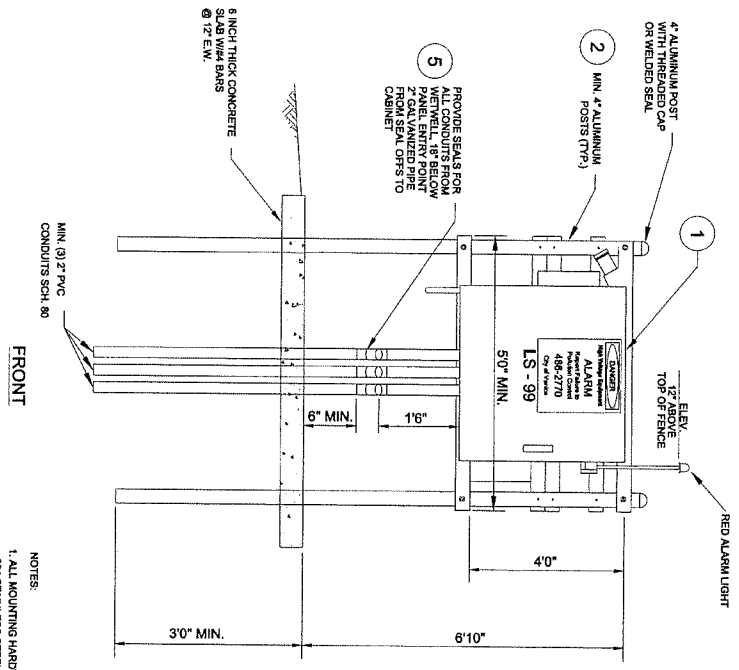


FILE NO.
1030 131
SHEET **10** OF **13**
LS-2



- NOTES:
1. CONTRACTOR TO PLANT TREES AND SHRUBS SURROUNDING THE LIFT STATION WITH EXCEPTION OF A 12 FOOT ENTRANCE. THE LOCATION OF THE 12 FOOT ENTRANCE SHALL BE APPROVED BY THE UTILITIES DEPARTMENT. TREES & SHRUBS SHALL NOT INTERFERE WITH STRUCTURE, PANELS, ACCESS TO WETWELL OR VALVE VAULT. ALL TREES & SHRUBS SHOULD MATCH SURROUNDINGS SO AS TO MAKE THE LIFT STATION INCONSPICUOUS.
 2. CONDUIT CORERS IN WETWELL SHALL BE DIRECTED TOWARDS THE CONTROL PANEL TO MINIMIZE DEFLECTIONS.
 3. ENTIRE LIFT STATION SITE SHALL BE LINED WITH 12 LAYERS OF VISQUEEN AND WASHED SHELL AT A MINIMUM OF 6" THICKNESS.
 4. MINIMUM 12" WIDE ACCESS ROADWAY TO LIFT STATION MUST BE PROVIDED. LAYOUT SHALL BE SUBMITTED FOR APPROVAL BY THE CITY OF VENICE UTILITIES DEPARTMENT PRIOR TO CONSTRUCTION.
 5. AN ADDITIONAL FOUR FOOT WALK-THRU GATE MAY BE REQUIRED.
 6. F.P.L. POINT OF CONN. (P.O.C.) TO BE ADDED ON AS LOCATED TO L.S. METER CAN.
 7. METER CAN TO L.S. P.O.C. LOCATE TO BE ADDED ON REFERENCE DRAWINGS.
 8. THE HOME OWNERS ASSOCIATION OR ENTITY RESPONSIBLE FOR COMMON AREA MAINTENANCE IS RESPONSIBLE TO MAINTAIN THE TREES & SHRUBS PLANTED AT LIFT STATION.
 9. SPARE PARTS SHALL BE DELIVERED TO CITY UTILITIES DEPARTMENT PRIOR TO ACCEPTANCE OF LIFT STATION.
 10. 30'x30' AREA AROUND THE LIFT STATION SHALL BE LEVEL AND FLAT.

1 LIFT STATION LAYOUT



- NOTES:
1. ALL MOUNTING HARDWARE SHALL BE MINIMUM OF 304 STAINLESS STEEL W/ NEOPRENE GASKETS.
 2. ALL WATER SERVICE PIPING SHALL BE 3/4" RIGID COPPER.
 3. ALL PIPING IN CONTACT WITH CONCRETE PAD SHALL BE COATED WITH COAL-TAR EPOXY.

2 CONTROL PANEL

ITEM	QUANTITY	DESCRIPTION
1	1	CONTROL PANEL. LOCATION OF THE CONTROL PANEL SHALL CONFORM WITH THE LAYOUT AND ORIENTATION SHOWN WITHIN THIS PLAN SET AND THE CONTROL PANEL SHALL PROVIDE: <ol style="list-style-type: none"> 1. TWO (2) MECHANICALLY INTERLOCKED MAIN CIRCUIT BREAKERS (ONE FOR EMERGENCY STOP AND ONE FOR SERVICE STOP) WITH 100 AMPERE RATING. 2. EMERGENCY GENERATOR RECEPTACLE (CONFORM TO OTHERS IN SYSTEMS, ALTERNATOR AND ALTERNATOR TEST SWITCH, CONVEYER FLOW, LEVEL, ALARM WITH LIGHT, HORN, AND SILENCER SWITCH, CONSUMER OUTLET WITH CIRCUIT BREAKER, LIGHTING ARRESTOR, VOLTAGE/PHASE MONITOR, CONTROL CIRCUIT BREAKER, CONTROL TRANSFORMER (480-VOLT SERVICE FRONT DOOR). 3. ALUMINUM DEAD FRONT PANEL, CONSTRUCTION, NEAR 4" TYPE 304 STAINLESS STEEL RAIN-TIGHT ENCLOSURE WITH DRIP SHIELD, SEAL, PAUL MODULE, ALUMINUM METER, NON SWITCH AND RUNNING LIGHTS FOR EACH PUMP. ALL THE METER, SELF-TAPPING SCREWS OR NUT-SECURED SCREWS ARE UNACCEPTABLE. 4. ALL CONDUITS SHALL BE 2 INCH SCHEDULE 80 PVC, EXCEPT FOR THE GROUND CONDUIT WHICH SHALL BE 1/2 INCH SCHEDULE 80 PVC. ALL CONDUITS SHALL ENTER FROM THE BOTTOM OF THE ENCLOSURE, WITH THE POWER SUPPLY CONDUITS BETWEEN SEAL OFF & PANEL SHALL BE 2" DIA. 1/2" LONG GALVANIZED PIPE. 5. LEVEL, CONTROL SYSTEM TO START AND STOP THE PUMPS IN RESPONSE TO WETWELL LIQUID LEVELS. LEAD PUMP ON, LAG PUMP OFF, ALARM ELEVATIONS WITHIN THE LIMITS SET BY THE SIGNALING DEPARTMENT SHALL BE AT ELEVATIONS WITHIN THE LIMITS SET BY THE SIGNALING DEPARTMENT. 6. ALUMINUM HORN AND GENERATOR RECEPTACLE WITH WEATHERPROOF FITTINGS WITH APPLIED SILICON AROUND PERIMETER OF MOUNTING. THE VISUAL TOP OF HORN SHALL BE STRAPPED WITH A SS BRACKET WELDED TO THE SIDE OF THE CONTROL PANEL.
2	1	CONTROL PANEL SUPPORT. ALL EQUIPMENT SHALL BE MOUNTED USING 4"x2" ALUMINUM CHANNEL, ISOLATE ALL DISSIMILAR METALS. MOUNTING HARDWARE THROUGHOUT. 316 STAINLESS STEEL OR ALUMINUM.
3	1	METER CAN. 200-AMP W/ BANK METER CAN WITH BYPASS HANDLE. METER CAN WILL FEED 240 VOLT, 3-PHASE POWER WITH NEUTRAL.
4	1	DISCONNECT SWITCH. SHALL BE NEAR 4" TYPE 304 STAINLESS STEEL, NON-FUSED SWITCH. SHALL BE PROVIDED PRIOR TO THE CONTROL PANEL IN SERIES CONNECTIONS CONFIGURATION. MIN. 100 AMP SQUARE D TYPE NU 363 DS, SERVICE ENTRANCE RATED. ELECTRIC SERVICE SUPPLY SHALL BE A MINIMUM OF 100 AMPS.
5	(AS NECESSARY)	ELECTRICAL CONDUIT. EACH PUMP POWER CORD AND LOW VOLTAGE SENSOR WILL HAVE A 2 INCH SCHEDULE 80 PVC ELECTRICAL CONDUIT WITH A 2 INCH FLAT SEVEN SEAL OFF 18 INCHES BELOW THE BOTTOM OF THE ENCLOSURE. THE FOUR FLAT SEVEN SEAL OFF WITH A 2 INCH APPLIATION SEAL OFF 18 INCHES BELOW THE BOTTOM OF THE ENCLOSURE. AND SEAL OFF CEMENT W/ DUCT SEAL ON BOTTOM FROM ALL CONDUITS COMING FROM WETWELL.

UPS CONTROL PANEL. LOCATION OF UPS CONTROL PANEL SHALL CONFORM WITH THE LAYOUT AND ORIENTATION SHOWN WITHIN THIS PLAN SET AND THE UPS PANEL SHALL PROVIDE:

1. UNMOUNTABLE POWER SUPPLY (APC BR1001).
2. 100 AMP AND 240 VOLT WITH THERMOBAT.
3. FUSE.
4. 120V RECEPTACLE FOR UPS.

3 CONTROL PANEL SCHEDULE

No.	Date	Revision	BY	DATE:
1	11/2007	2007 UPDATE	JR	JAN. 15, 2012
2	1/1/2008	2008 UPDATE	JW	DRAWN BY:
3	1/15/2009	2009 UPDATE	MG	M.T.
4	1/15/2010	2009 UPDATE	MG	CHECKED BY:
5	1/15/2011	2011 UPDATE	MG	K.W.
6	1/15/2012	2012 UPDATE	MT	SCALE: AS SHOWN

2012 STANDARD DETAILS LIFT STATION DETAILS LIFT STATION LAYOUT & CONTROL PANEL

CITY OF VENICE
ENGINEERING DEPARTMENT
401 WEST VENICE AVE.
VENICE FL 34285
(941) 486-2626
FAX (941) 480-3031



